

ILS or LOC RWY 5  
ANDERSON RGNL (AND)

**MISSED APPROACH:** Climb to 1600 then climbing right turn to 2500 direct ELW VORTAC and hold.

113.4 ODF  
Chan 81

113.4 ODF  
Chan 81

R-123

R-134

OWUXO INT

(IF/IAF)  
OYUNA INT  
ELW 6

2500

051°

1 min

231°

231°

2500

232° (6)

R-224

044°

224°

LOCALIZER 111.9  
I-AND

ELECTRIC CITY  
108.6 ELW 23  
Chan 23

MSA ELW 25 NM  
3000

ALTERNATE MISSED APCH FIX  
IVANS  
GRD 16.2

R-289

109°

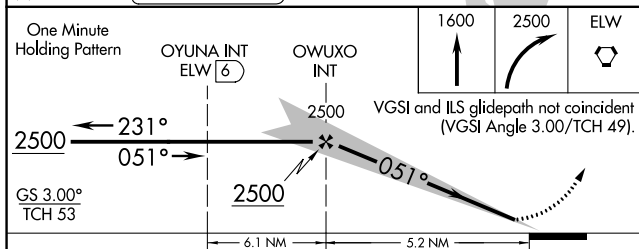
289°


109.6 AMN  
Chan 33

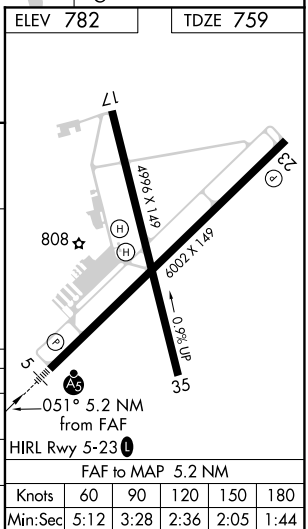
115.5 GRD  
Chan 102

BT

Procedure NA for arrivals on AHN VOR/DME



CATEGORY	A	B	C	D
S-ILS 5	958-1½ 200 (200-½)			
S-LOC 5	1200-1½ 442 (500-½)		1200-¾ 442 (500-¾)	1200-1 442 (500-1)
 CIRCLING	1260-1 478 (500-1)	1320-1 538 (600-1)	1440-1¾ 658 (700-1¾)	1500-2¼ 718 (800-2¼)



SE-2, 31 DEC 2020 to 28 JAN 2021

SE-2, 31 DEC 2020 to 28 JAN 2021