

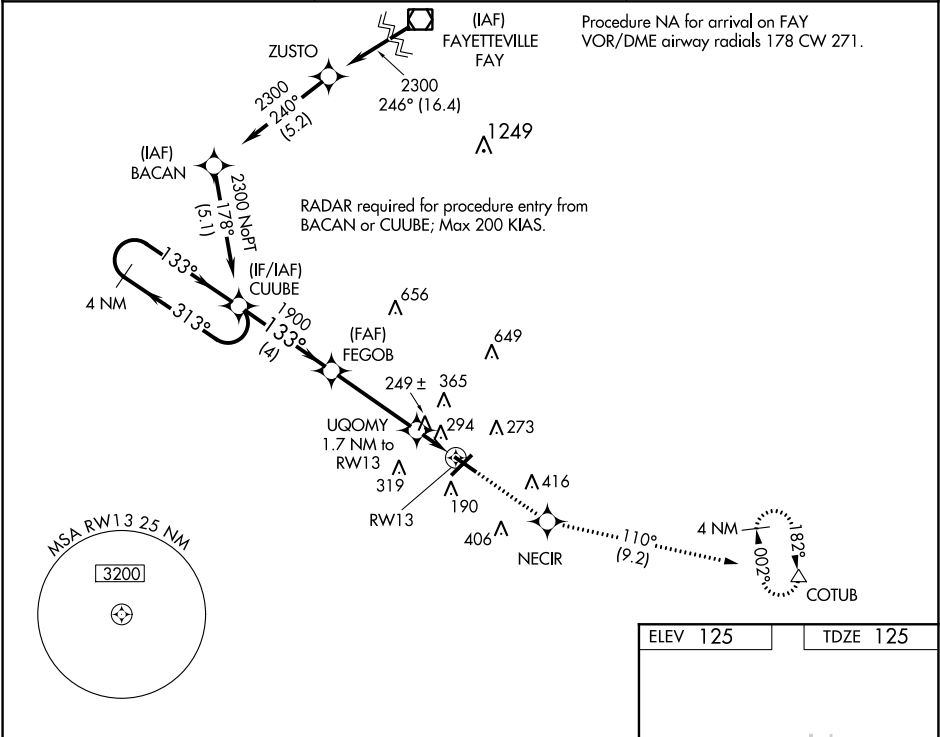
WAAS CH 61221 W13A	APP CRS 133°	Rwy Idg TDZE 125 Apt Elev 125	5003
--	------------------------	---	-------------

RNAV (GPS) RWY 13

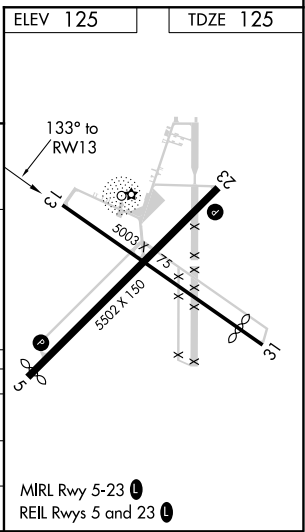
LUMBERTON RGNL (LBT)

<div><div>▼</div><div>▲</div></div> <div>DME/DME RNP-0.3 NA. Helicopter visibility reduction below 1 SM NA. When local altimeter setting not received use Maxton altimeter setting and increase all MDA 60 feet; increase LP Cat C visibility ¼ mile and LNAV Cat C visibility ½ mile. Rwy 13 Straight-in and Circling and Circling to Rwy 31 NA at night.</div>	MISSED APPROACH: Climb to 3000 direct NECIR and on track 110° to COTUB and hold.
--	--

ASOS 134.775	FAYETTEVILLE APP CON 133.0 290.25	UNICOM 122.8 (CTAF)
------------------------	---	-------------------------------



4 NM Holding Pattern	CUUBE		3000	NECIR	tr 110°	COTUB
	2300	1900	700			
4 NM		3.7 NM	1.7 NM			
CATEGORY	A	B	C	D		
LP MDA	500-1 375 (400-1)			NA		
LNAV MDA	600-1	475 (500-1)	600-1 3/8 475 (500-1 3/8)	NA		
CIRCLING	660-1	535 (600-1)	660-1 1/2 535 (600-1 1/2)	NA		



SE-2, 31 DEC 2020 to 28 JAN 2021

SE-2, 31 DEC 2020 to 28 JAN 2021