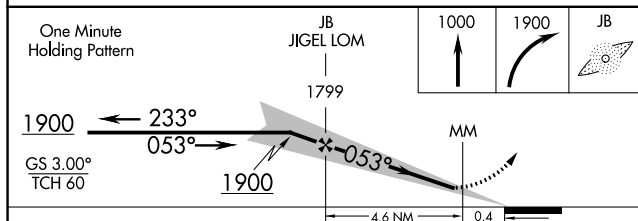


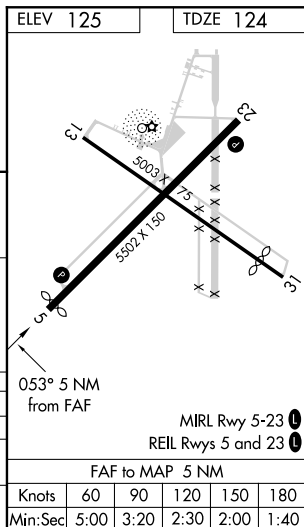
ILS or LOC RWY 5
LUMBERTON RGNL (LBT)

MISSED APPROACH: Climb to 1000 then climbing right turn to 1900 direct JIGEL LOM and hold.

ADF REQUIRED



CATEGORY	A	B	C	D
S-ILS 5	360- $\frac{3}{4}$ 236 (300- $\frac{3}{4}$)			NA
S-LOC 5	600-1	476 (500-1)	600-1 $\frac{1}{8}$ 476 (500-1 $\frac{3}{8}$)	NA
CIRCLING	660-1	535 (600-1)	660-1 $\frac{1}{2}$ 535 (600-1 $\frac{1}{2}$)	NA



SE-2, 31 DEC 2020 to 28 JAN 2021