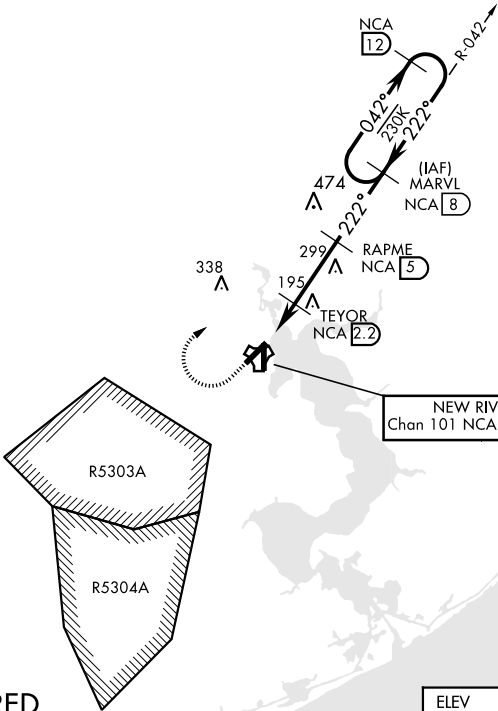


TACAN RWY 23

TACAN NCA Chan 101	APCH CRS 222°	Rwy Idg TDZE 24 Arprt Elev 26	AL-732 [USN] NEW RIVER MCAS (MC CUTCHEON FLD)(KNCA)	
------------------------------	-------------------------	---	---	--

MISSED APPROACH: Climb to 600 then climbing right turn to 1500, intercept NCA TACAN R-042 to MARVL and hold.				
ATIS ★ 288.325	CHERRY POINT APP CON 119.35 377.175	NEW RIVER TOWER★ 120.00★ 360.2	GND CON 121.8 254.275	CLNC DEL 269.25
				ASR/PAR

CAUTION: Intmed segment length 3 NM.

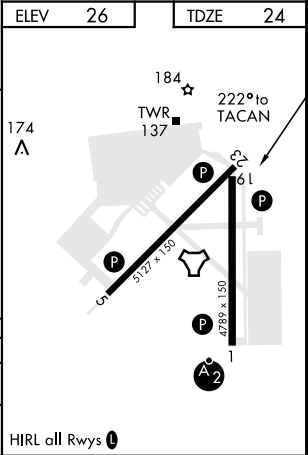


RADAR REQUIRED

For Missed Approach

EMERG SAFE ALT 100 NM 3400

600	1500	MARVL NCA R-042				
TACAN	SEASO 1.7	TEYOR 2.2	RAPME 5	MARVL R-042 8	NCA 12	
4.0 NM						
CATEGORY	A		B		D	
S-23	440-1	416	(500-1)	440-1 1/8	416	(500-1 1/8)
CIRCLING	500-1	474	(500-1)	500-1 1/2	580-2	(500-1 1/2)



TACAN RWY 23

SE-2, 31 DEC 2020 to 28 JAN 2021

SE-2, 31 DEC 2020 to 28 JAN 2021