

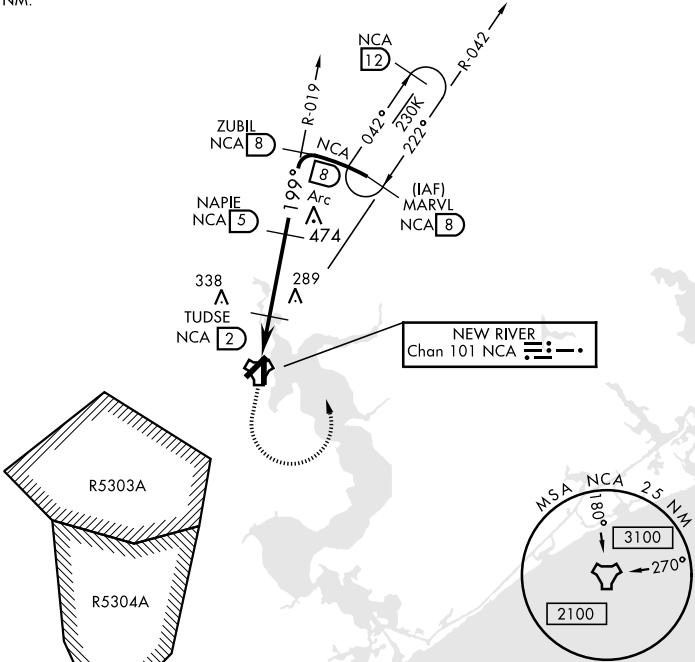
TACAN RWY 19

TACAN NCA Chan 101	APCH CRS 199°	Rwy Idg TDZE Arpt Elev	4789 23 26
-----------------------	------------------	------------------------------	------------------

AL-732 [USN] NEW RIVER MCAS (MC CUTCHEON FLD)(KNCA)

MISSED APPROACH: Climbing left turn to 1500 intercept NCA R-042 direct MARVL (R-042/8 DME) and hold.				
ATIS ★ 288.325	CHERRY POINT APP CON 119.35 377.175	NEW RIVER TOWER★ 120.00★ 360.2	GND CON 121.8 254.275	CLNC DEL 269.25
ASR/PAR				

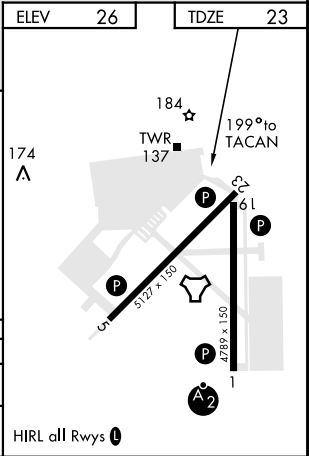
CAUTION: Intmed seg len 3 NM.



RADAR REQUIRED

EMERG SAFE ALT 100 NM 3400

1500 NCA R-042	MARVL NCA 8	NAPIE 5	ZUBIL R-019 8	MARVL R-042 8
TACAN	POSTY 5	TUDSE 2.1	1500	1500
1.6 NM	1.6 NM	2.9 NM	1500	1500
2.97° TCH 41				
Arc				
CATEGORY	A		B	
S-19	440-1	417	(500-1)	440-1 1/8 417 (500-1 1/8)
CIRCLING	500-1	474	(500-1)	500-1 1/2 474 (500-1 1/2) 580-2 554 (600-2)



TACAN RWY 19

SE-2, 31 DEC 2020 to 28 JAN 2021

SE-2, 31 DEC 2020 to 28 JAN 2021