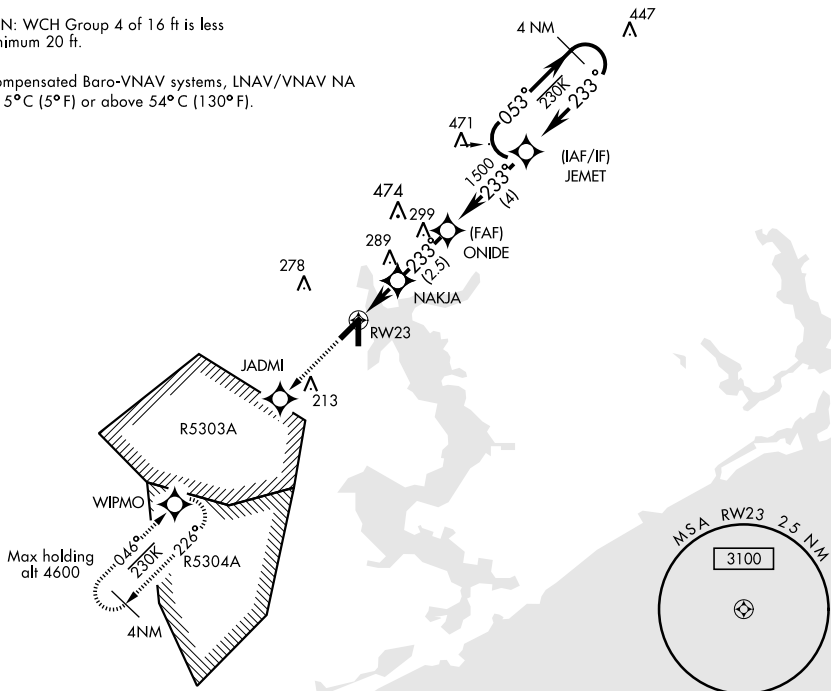


RNAV (GPS) RWY 23

WAAS Chan 92556 W23A		APCH CRS 233°	Rwy Idg 5127 TDZE 24 Arpt Elev 26	AL-732 [USN] NEW RIVER MCAS (MC CUTCHEON FLD) (KNCA)			
DME/DME RNP-0.3 NA.				MISSED APPROACH: Climb to 1600 direct JADMI direct WIPMO and hold.			
<div>▼</div>							
ATIS ★ 288.325		CHERRY POINT APP CON 119.35 377.175		NEW RIVER TOWER ★ 120.0 0 ★ 360.2	GND CON 121.8 254.275	CLNC DEL 269.25	ASR/ PAR

CAUTION: WCH Group 4 of 16 ft is less than minimum 20 ft.

For uncompensated Baro-VNAV systems, LNAV/VNAV NA below -15°C (5°F) or above 54°C (130°F).



EMERG SAFE ALT 100 NM 3400

