

JACKSONVILLE, NORTH CAROLINA

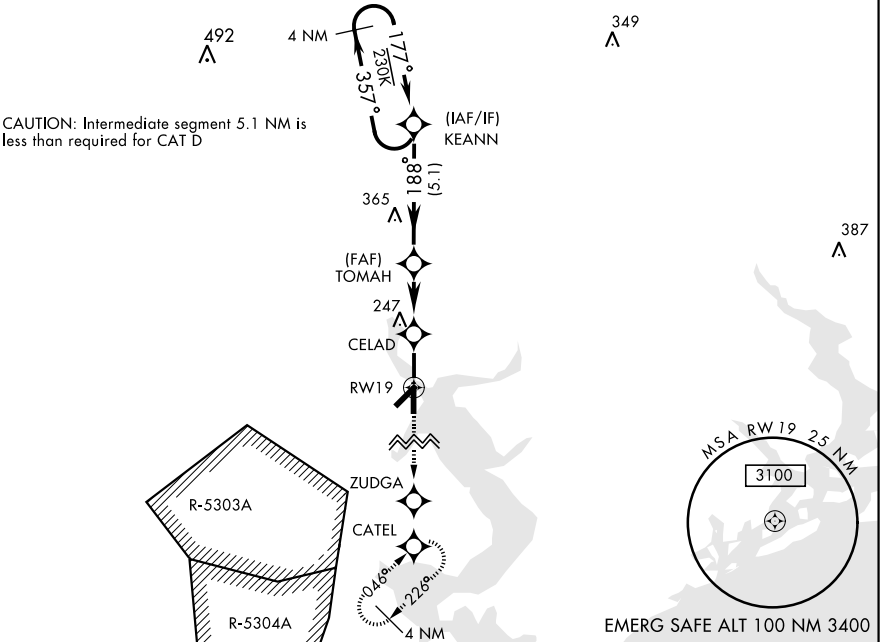
RNAV (GPS) RWY 19

APCH CRS	Rwy Idg	4789
188°	TDZE	23
	Arpt Elev	26

AL-732 [USN] NEW RIVER MCAS (MC CUTCHEON FLD)(KNCA)

▼ Baro VNAV NA below -15°C (5°F) and above 42°C (108°F). DME/DME RNP-0.3 NA.		MISSED APPROACH: Climb to 2100 direct ZUDGA, direct CATEL and hold.			
ATIS ★ 288.325	CHERRY POINT APP CON 119.35 377.175	NEW RIVER TOWER★ 120.00★ 360.2	GND CON 121.8 254.275	CLNC DEL 269.25	ASR/PAR

WCH for Group 4 of 16 ft is less than minimum 20 ft.



2100 ↑		ZUDGA ✧		CATEL ✧		↑LNAV only		TOMAH		KEANN		ELEV 26		TDZE 23	
		↑1.2 NM to RW19		↑CELAD		188°		188°		357°		174 A		188° to RW19	
		700		1500		1500		1500		1500		GP 3.04° TCH 41		184 TWR 137	
CATEGORY		A		B		C		D							
LNAV/ VNAV DA				432-1 3/8		409		(500-1 3/8)							
LNAV MDA		440-1		417		(500-1)		440-1 1/8		417		(500-1 1/8)			
CIRCLING		500-1		474		(500-1)		500-1 1/2		474		(500-1 1/2)		580-2	
								474 (500-1 1/2)		554		(600-2)			
												HIRL all Rwys 1			

JACKSONVILLE, NORTH CAROLINA

34° 43'N-77° 26'W

NEW RIVER MCAS (MC CUTCHEON FLD)(KNCA)

Amldt 2 22JUN17

RNAV (GPS) RWY 19

SE-2, 31 DEC 2020 to 28 JAN 2021

SE-2, 31 DEC 2020 to 28 JAN 2021