

RNAV (GPS) RWY 1

APCH CRS 008°	Rwy Idg 4789 THRE 24 Arpt Elev 26
-------------------------	--

AL-732 [USN] NEW RIVER MCAS (MC CUTCHEON FLD) (KNCA)

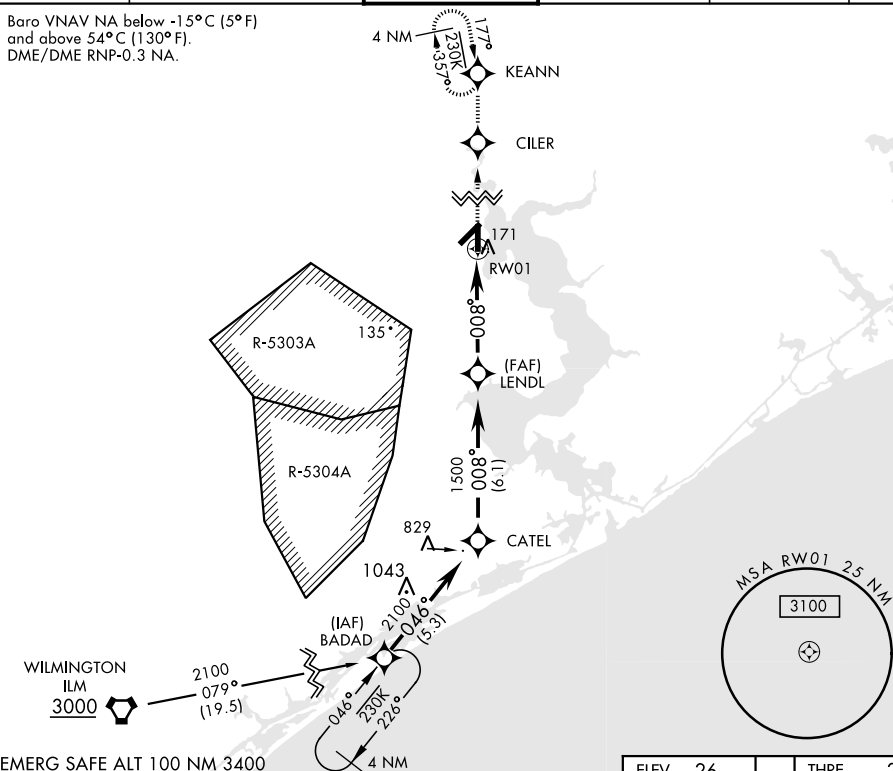
T * When ALS inop, increase vis CAT AB to $\frac{7}{8}$ mile, CD to 1 mile.
 ** When ALS inop, increase vis CAT AB to 1 mile, CAT CD to $1\frac{1}{8}$ miles.



MISSED APPROACH: Climb to 1500 direct CILER,
008° track to KEANN and hold.

ATIS ★ 288.325	CHERRY POINT APP CON 119.35 377.175	NEW RIVER TOWER★ 120.00★ 360.2	GND CON 121.8 254.275	CLNC DEL 269.25	ASR/PAR
-------------------	--	-----------------------------------	--------------------------	--------------------	---------

Baro VNAV NA below -15°C (5°F)
and above 54°C (130°F).
DME/DME RNP-0.3 NA.

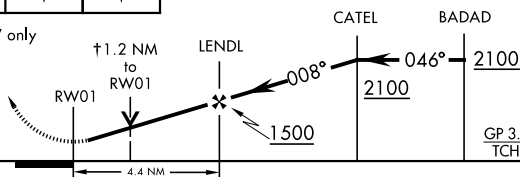


EMERG SAFE ALT 100 NM 3400

1500	CILER	KEANN
		

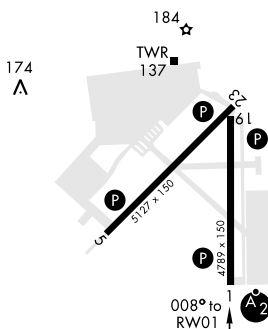
TCH (49) is not coincident
with VGSI TCH (45)

† LNAV only



CATEGORY	A	B	C	D
INAV/ VNAV DA *	305- $\frac{3}{4}$ 281 (300- $\frac{3}{4}$)	316- $\frac{3}{4}$ 292 (300- $\frac{3}{4}$)	324- $\frac{3}{4}$ 300 (300- $\frac{3}{4}$)	335- $\frac{3}{4}$ 311 (400- $\frac{3}{4}$)
INAV MDA **	440- $\frac{3}{4}$ 416 (500- $\frac{3}{4}$)	440-1 416 (500-1)		
CIRCLING	500-1 474 (500-1)	500-1 $\frac{1}{2}$ 474 (500-1 $\frac{1}{2}$)	580-2 554 (600-2)	

ELEV	26		THRE	24
------	----	--	------	----

HIRL all Rwy **L**

RNAV (GPS) RWY 1