

WAAS CH 42921 W24A	APP CRS 241°	Rwy Idg TDZE 1190 Apt Elev 1190
--	------------------------	---

RNAV (GPS) RWY 24

HICKORY RGNL (HKY)

RNP APCH

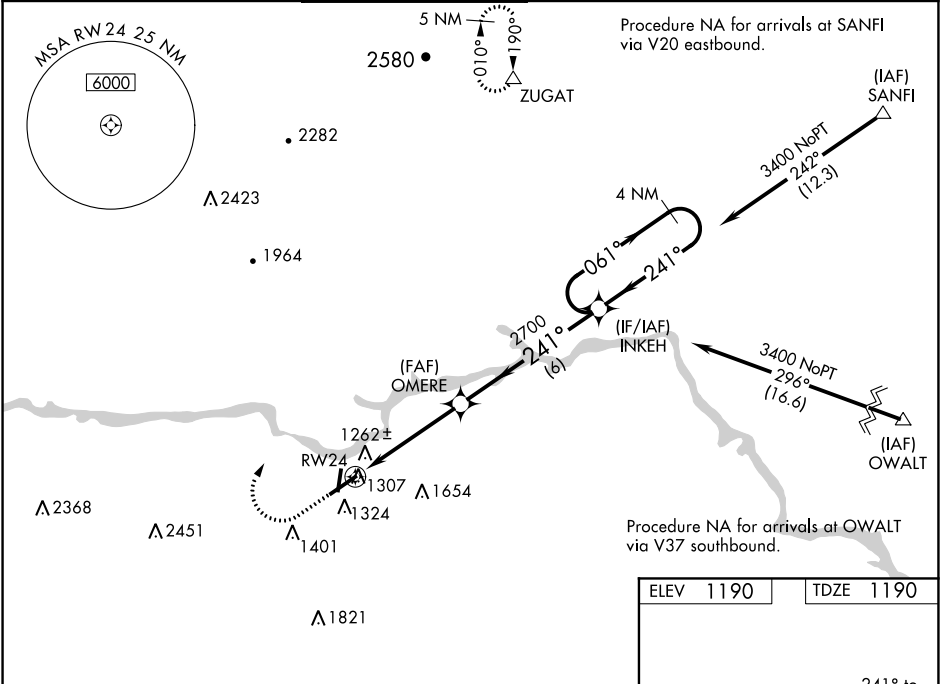
▼ Baro-VNAV NA when using Morganton altimeter setting. For uncompensated Baro-VNAV systems, LNAV/VNAV NA below -17°C (2°F) or above 36°C (96°F). When local altimeter setting not received, use Morganton altimeter setting and increase all DA 39 feet and all MDA 40 feet; increase LNAV/VNAV all Cats and LNAV Cats C/D visibility ½ mile.

▲ Circling Rwy 1, 6, 19 NA at night. VDP NA with Morganton altimeter setting. For inop MALSRS, increase LNAV/VNAV all Cats visibility to ¾ mile.

MALSRS

MISSED APPROACH:
Climb to 2000 then climbing right turn to 5400 direct ZUGAT and hold, continue climb-in-hold to 5400.

ASOS 118.325	ATLANTA CENTER 125.15 263.0	HICKORY TOWER★ 128.15 (CTAF) 0	GND CON 121.7	CLNC DEL 121.7	CLNC DEL 124.25 (When twr closed)
------------------------	---------------------------------------	--	-------------------------	--------------------------	--



2000

↑

5400

↗

ZUGAT

△

*LNAV only.

*1.1 NM to RW24

RW24

↖

OMERE

2700

INKEH

4 NM Holding Pattern

061° →

← 241°

3400

GP 3.00°

TCH 53

241°

2700

1.1 NM

3.5 NM

6 NM

CATEGORY	A		B		C	D
LPV DA			1390-½	200 (200-½)		
LNAV/VNAV DA			1468-½	278 (300-½)		
LNAV MDA	1580-½	390 (400-½)	1580-⅝		390 (400-⅝)	
CIRCLING	1640-1	450 (500-1)	1640-1½		1740-2	
			450 (500-1½)		550 (600-2)	

