

LOC I-HKY	APP CRS	Rwy Idg	6401
108.7	241°	TDZE	1190
		Apt Elev	1190

ILS or LOC RWY 24

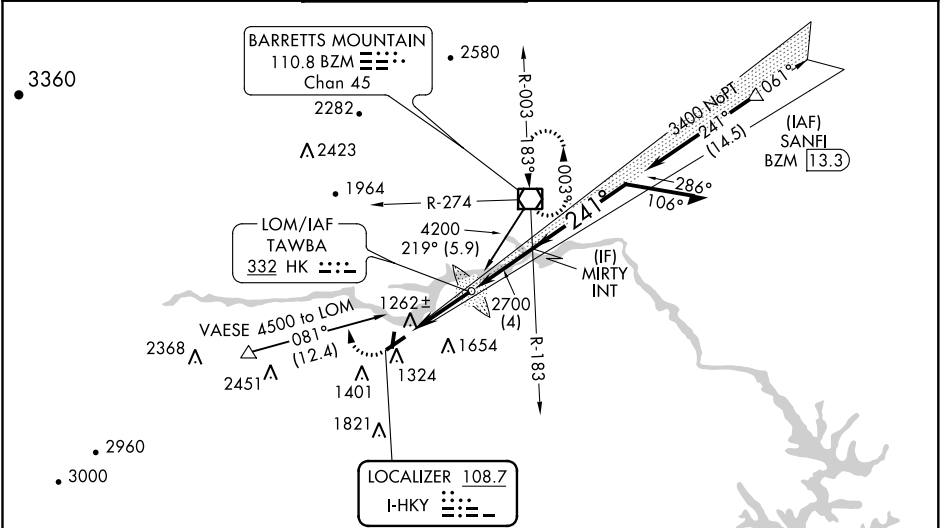
HICKORY RGNL (HKY)

When local altimeter setting not received, use Morganton altimeter setting and increase all DA 39 feet and all MDA 40 feet; increase S-LOC 24 Cat C and D visibility ½ mile. For inoperative MALSR, increase S-LOC 24 Cat C/D visibility to 1½ mile. Circling Rwy 1, 6, 19 NA at night.

MALSR

MISSED APPROACH: Climb to 1700 then climbing right turn to 4000 on heading 340° and on BZM VOR/DME R-274 to BZM VOR/DME and hold.

ASOS	ATLANTA CENTER	HICKORY TOWER ★	GND CON	CLNC DEL	CLNC DEL
118.325	125.15 263.0	128.15 (CTAF) 0	121.7	121.7	124.25 (When twr closed)



ELEV 1190 TDZE 1190

241° 4.4 NM from FAF

61

4400 X 150

0.8% UP

1251

1223

6401 X 150

0.8% UP

ALTERNATE MISSED APCH FIX

TAWBA HK 332

1700

4000

BZM

R-274

hdg 340°

HK LOM

2662

MIRTY INT

061°

241°

3400

3400

2700

GS 3.00°

TCH 53

4.4 NM

4 NM

Remain within 10 NM

HIRL Rwy 6-24	1
MIRL Rwy 1-19	1
REIL Rwy 1	1
REIL Rws 6 and 19	
FAF to MAP 4.4 NM	
Knots	60 90 120 150 180
Min:Sec	4:24 2:56 2:12 1:46 1:28
CATEGORY	A B C D
S-ILS 24	1390-½ 200 (200-½)
S-LOC 24	1600-½ 410 (500-½) 1600-¾ 410 (500-¾)
CIRCLING	1640-1 450 (500-1) 1640-1½ 450 (500-1½) 1740-2 550 (600-2)