

RNAV (GPS) RWY 10
FAYETTEVILLE RGNL/GRANNIS FIELD (FAY)

T Rwy 10 helicopter visibility reduction below $\frac{3}{4}$ SM NA.

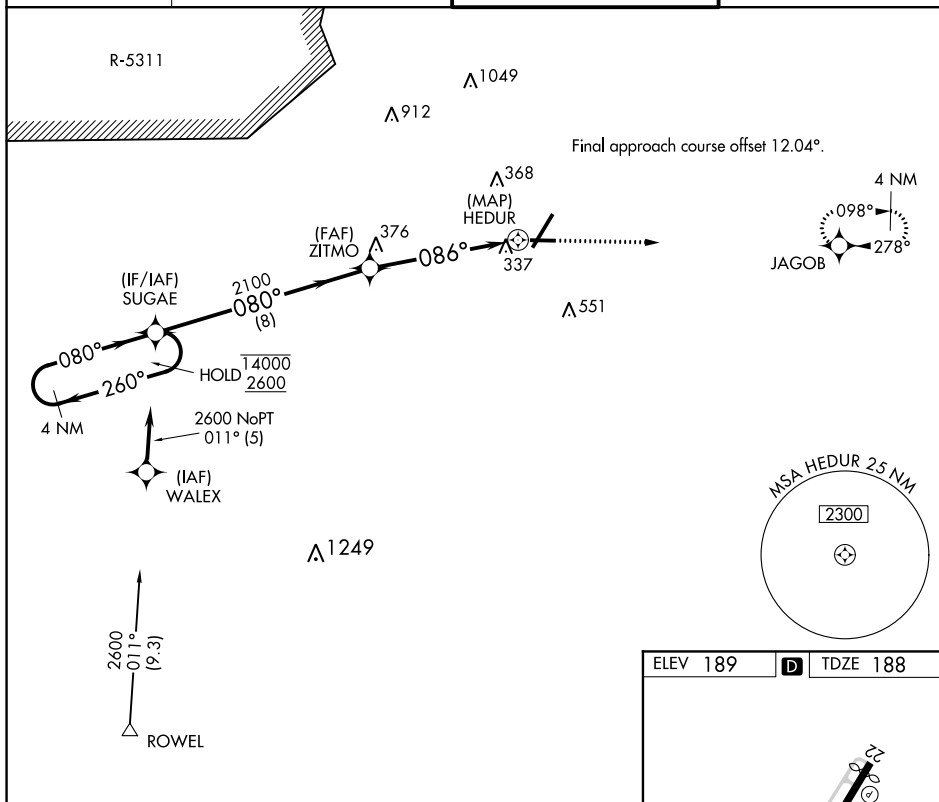
MISSED APPROACH: Climb to 2600
direct JAGOB and hold.

ATIS
121.25

FAYETTEVILLE APP CON
133.0 290.25

FAYETTEVILLE TOWER
118.3 269.2

GND CON
121.7 348.6



SE-2, 31 DEC 2020 to 28 JAN 2021

