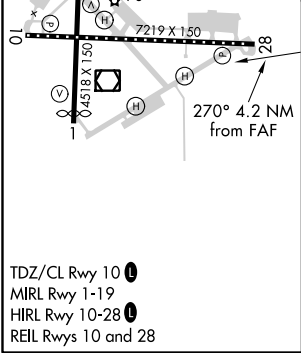
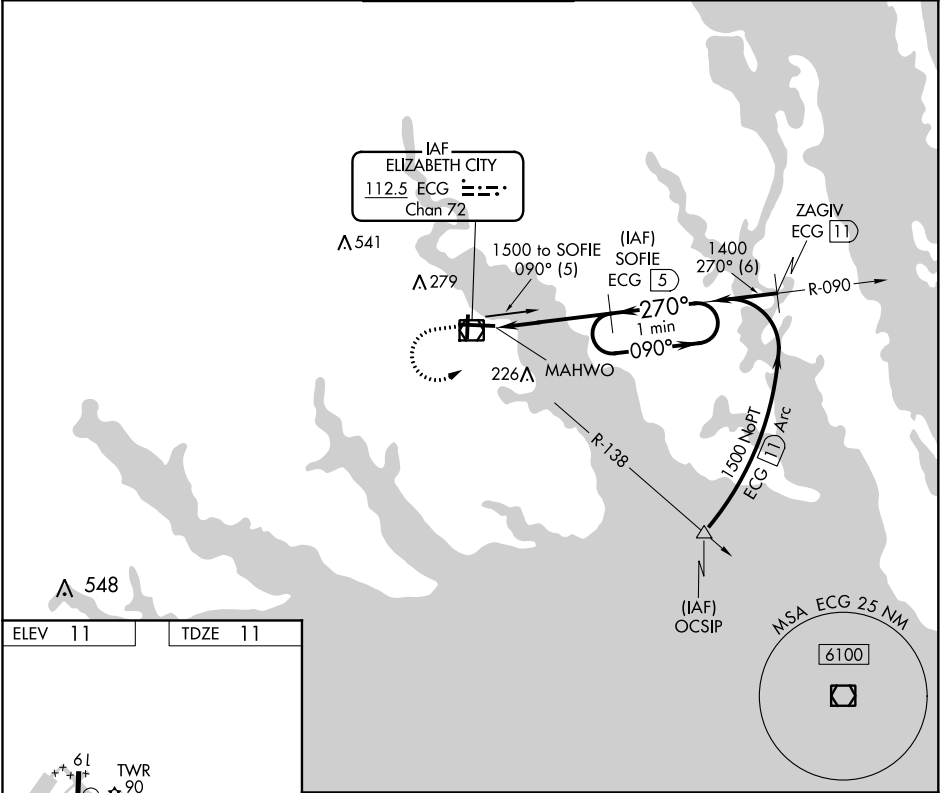


| | | |
|----------------|-------------|--------------------|
| VOR/DME ECG | APP CRS | Rwy Idg |
| 112.5 | 270° | 7219 |
| Chan 72 | | TDZE 11 |
| | | Apt Elev 11 |

VOR/DME RWY 28
ELIZABETH CITY COAST GUARD AIR STATION/RGNL (ECG)

| | |
|---|--|
| <p>Procedure NA when tethered balloon located approximately 2 miles southeast of airport is flying. When local altimeter setting not received, use Currituck altimeter setting and increase all MDAs 40 feet and S-28 Cat C visibility ¼ SM and Circling Cat C visibility ¼ SM. Rwy 28 helicopter visibility reduction below ¾ SM NA.</p> | <p>MISSED APPROACH: Climb to 1000 then climbing left turn to 1500 via ECG R-090 to SOFIE 5 DME and hold.</p> |
|---|--|

| | | | | |
|------------------------|--|--|-------------------------|-------------------------|
| ASOS 124.375 | NORFOLK APP CON 119.55 269,425 | ELIZABETH CITY TOWER★ 120.5 (CTAF) 355.6 | GND CON 121.9 | UNICOM 122.95 |
|------------------------|--|--|-------------------------|-------------------------|



| | | | | |
|-----------------|-------|---------------|------------------------|----------------------------|
| 1000 | 1500 | SOFIE ECG [5] | SOFIE ECG [5] | One Minute Holding Pattern |
| ECG R-090 | | | | |
| MAHWO ECG [0.8] | | | | |
| 270° | 1400 | 1500 | 090° | 270° |
| 4.2 NM | | | | |
| 2.99° | | | | |
| TCH 51 | | | | |
| CATEGORY | A | B | C | D |
| S-28 | 380-1 | 369 (400-1) | | 380-1¼ 369 (400-1¼) |
| CIRCLING | 480-1 | 469 (500-1) | 580-1½ 569 (600-1½) | 640-2 629 (700-2) |