

RNAV (GPS) Y RWY 5R
RALEIGH-DURHAM INTL (RDU)

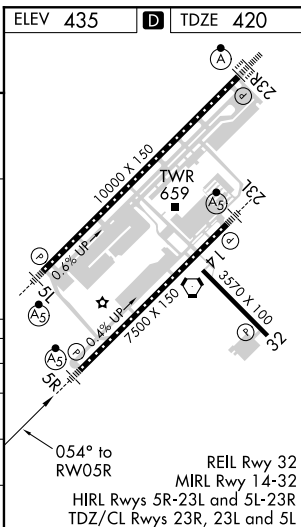
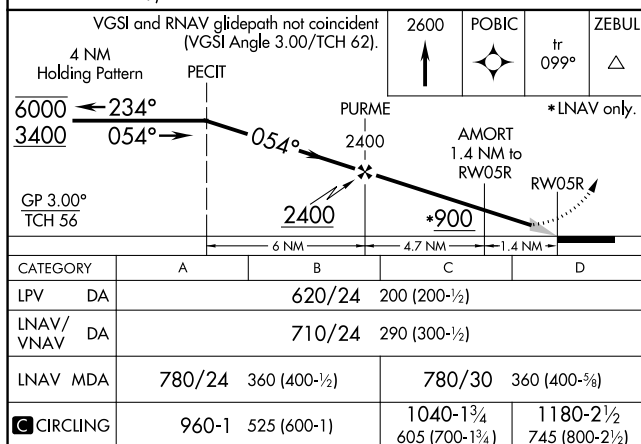
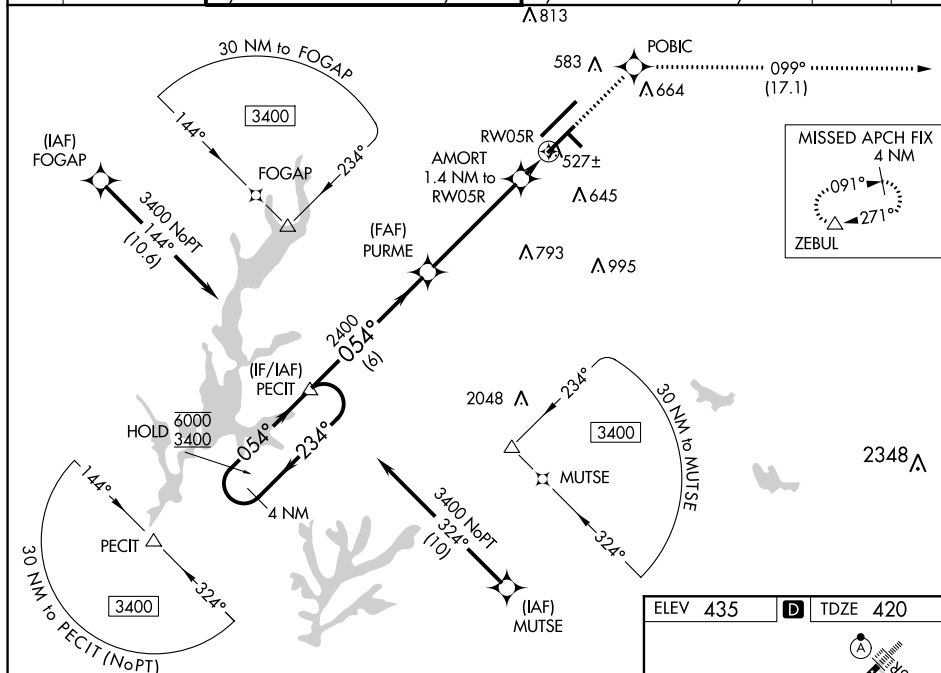
▼ Simultaneous approach authorized. LNAV procedure NA during simultaneous operations.

▲ For uncompensated Baro-VNAV systems, LNAV/VNAV NA below -10°C (14°F) or above 54°C (130°F). Use of FD or AP required during simultaneous operations. For inop ALS, increase LNAV/VNAV all Cats visibility to RVR 4500 and LNAV Cats C/D visibility to RVR 5500.



MISSED APPROACH:
Climb to 2600 direct
POBIC and on track
099° to ZEBUL
and hold.

D-ATIS	RALEIGH APP CON	(EAST) RALEIGH TOWER (WEST)	(EAST) GND CON (WEST)	CLNC DEL	CPDLC
123.8	127.675 307.9	127.45 257.8 Rwys 5R-23L and 14-32	119.3 257.8 Rwy 5L-23R	121.9 348.6 Rwys 5R-23L and 14-32	121.7 348.6 Rwy 5L-23R
				120.1	



SE-2, 31 DEC 2020 to 28 JAN 2021