

WAAS
CH **48813**
W05A

APP CRS
054°

Rwy Idg **10000**
TDZE **384**
Apt Elev **435**

RNAV (GPS) Y RWY 5L

RALEIGH-DURHAM INTL (RDU)

RNP APCH.

▼

▲

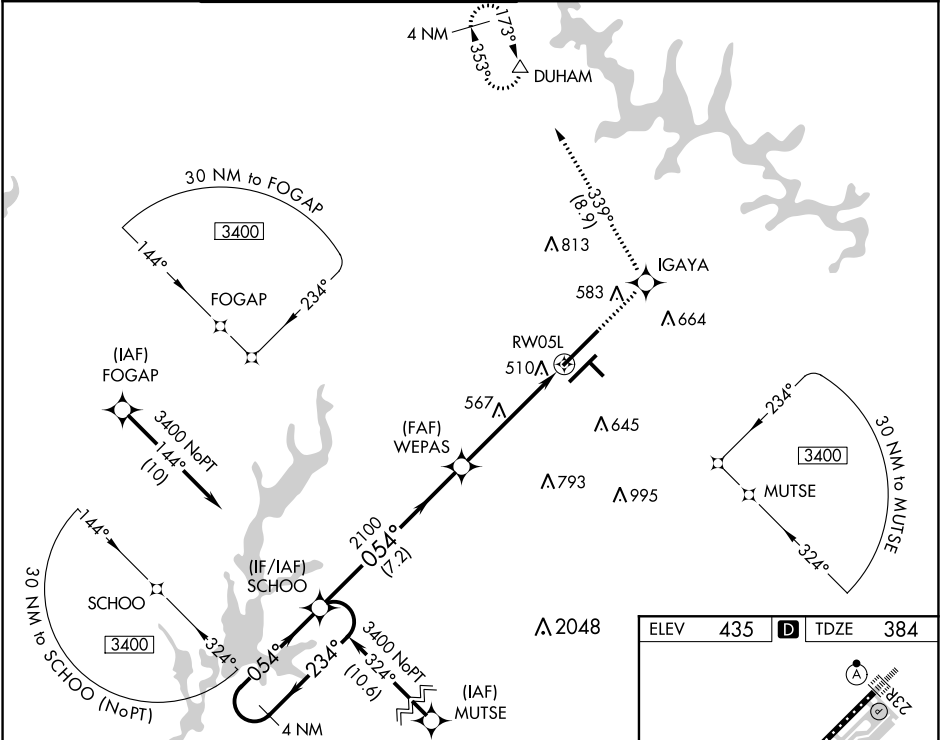
For uncompensated Baro-VNAV systems, LNAV/VNAV NA below -1.5°C (5°F) or above 48°C (118°F). Simultaneous approach authorized. LNAV procedure NA during simultaneous operations. Use of FD or AP providing RNAV track guidance required during simultaneous operations.

MALSR

AS

MISSED APPROACH: Climb to 2200 direct IGAYA and on track 339° to DUHAM and hold.

D-ATIS	RALEIGH APP CON	(EAST) RALEIGH TOWER (WEST)	(EAST) GND CON	(WEST)	CLNC DEL	CPDLC
123.8	127.675 307.9	127.45 257.8 Rwys 5R-23L and 14-32	119.3 257.8 Rwy 5L-23R	121.9 348.6 Rwys 5R-23L and 14-32	121.7 348.6 Rwy 5L-23R	120.1



4 NM Holding Pattern	SCHO	2200 IGAYA	tr 339°	DUHAM
3400	←234°	054°→		
GP 3.00°				
TCH 57				
VGSI and RNAV glidepath not coincident (VGSI Angle 3.00/TCH 72).				
	7.2 NM	3.8 NM	1.4 NM	
CATEGORY	A	B	C	D
LPV DA		595/24 211 (200-½)		
LNAV/VNAV DA		792/50 408 (400-1)		
LNAV MDA	880/24 496 (500-½)	880/40 496 (500-¾)	880/50 496 (500-1)	
CIRCLING	960-1 525 (600-1)	1040-1¾ 605 (700-1¾)	1180-2½ 745 (800-2½)	

ELEV 435 D TDZE 384

054° to RW05L

REIL Rwy 32
MIRL Rwy 14-32
HIRL Rwys 5R-23L and 5L-23R
TDZ/CL Rwys 23R, 23L and 5L