

WAAS CH 45613 W23A	APP CRS 234°	Rwy Idg 10000 TDZE 409 Apt Elev 435
--	------------------------	--

RNAV (GPS) Y RWY 23R
RALEIGH-DURHAM INTL (RDU)

RNP APCH.

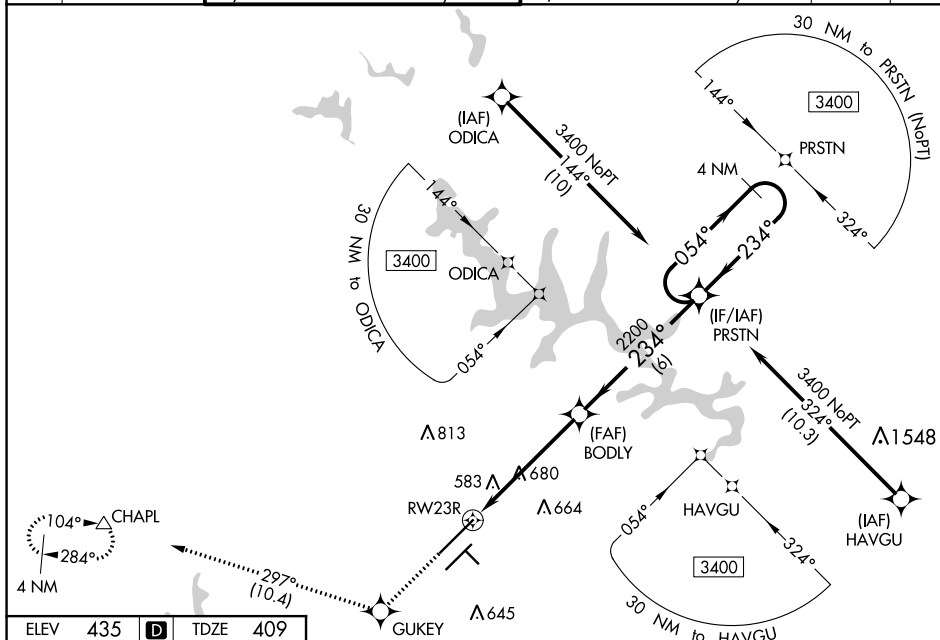
T For uncompensated Baro-VNAV systems, LNAV/VNAV NA below -15°C (5°F) or above 48°C (118°F). Simultaneous approach authorized. LNAV procedure
A NA during simultaneous operations. Use of FD or AP providing RNAV track guidance required during simultaneous operations.

ALSF-2



MISSED APPROACH: Climb to 3100 direct GUKEY and right turn on 297° track to CHAPL and hold.

D-ATIS	RALEIGH APP CON	(EAST) RALEIGH TOWER	(WEST)	(EAST) GND CON	(WEST)	CLNC DEL	CPDLC
123.8	127.675 307.9	127.45 257.8 Rwys 5R-23L and 14-32	119.3 257.8 Rwy 5L-23R	121.9 348.6 Rwys 5R-23L and 14-32	121.7 348.6 Rwy 5L-23R	120.1	



ELEV	435	D	TDZE	409
------	-----	----------	------	-----

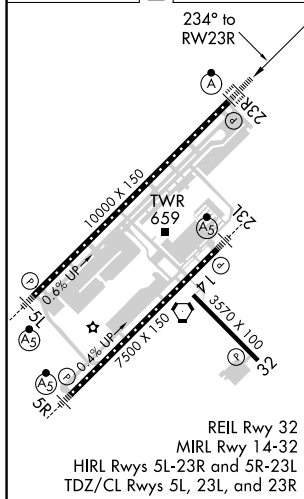


Diagram illustrating the layout of a VOR/DME station. The VOR/DME station is located at the center of a 3400m radius circle. The DME station is located at the center of a 2200m radius circle. The VOR station is located at the center of a 1600m radius circle. The diagram also shows a 3400m radius circle, a 2200m radius circle, and a 1600m radius circle. The VOR/DME station is located at the center of the 3400m circle. The DME station is located at the center of the 2200m circle. The VOR station is located at the center of the 1600m circle. The diagram also shows a 3400m radius circle, a 2200m radius circle, and a 1600m radius circle. The VOR/DME station is located at the center of the 3400m circle. The DME station is located at the center of the 2200m circle. The VOR station is located at the center of the 1600m circle.