

LOC/DME I-RDU 109.5 Chan 32	APP CRS 054°	Rwy Idg 7500 TDZE 420 Apt Elev 435	ILS RWY 5R (SA CAT I & II) RALEIGH-DURHAM INTL (RDU)
---	------------------------	---	--

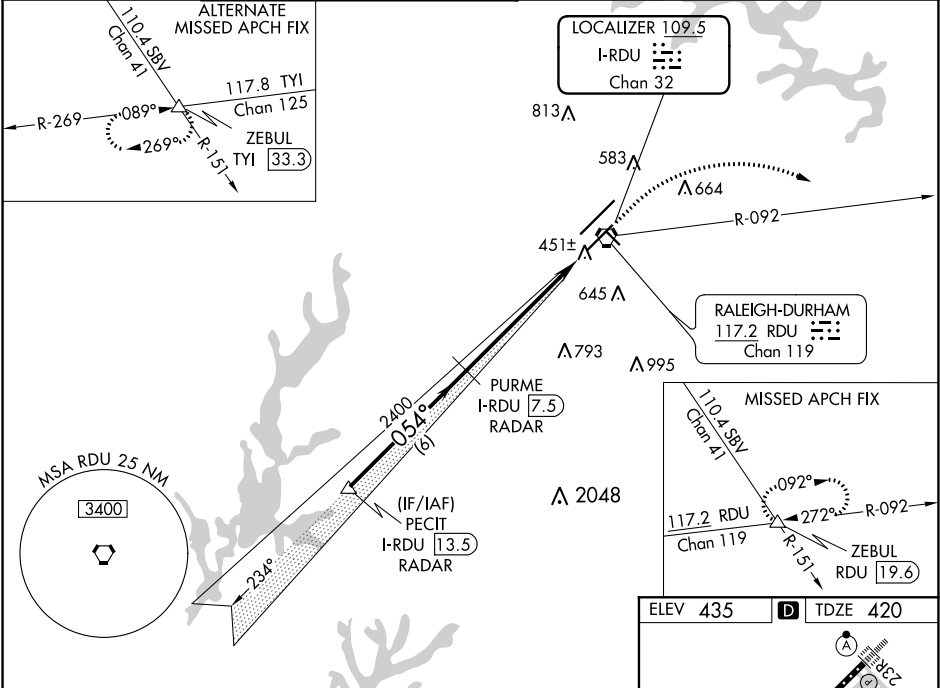
⚠ RADAR required for procedure entry.

⚠ Simultaneous approach authorized.
SA CAT I: Requires specific OPSPEC, MSPEC or LOA approval and use of HUD to DH.
SA CAT II: Reduced lighting: Requires specific OPSPEC, MSPEC or LOA approval and use of autoland or HUD to touchdown.

MALSR

MISSED APPROACH: Climb to 1000 then climbing right turn to 2600 on heading 130° and on RDU VORTAC R-092 to ZEBUL INT/RDU 19.6 DME and hold.

D-ATIS	RALEIGH APP CON	(EAST) RALEIGH TOWER (WEST)	(EAST) GND CON (WEST)	CLNC DEL	CPDLC
123.8	127.675 307.9	127.45 257.8 Rwys 5R-23L and 14-32	119.3 257.8 Rwy 5L-23R	121.9 348.6 Rwys 5R-23L and 14-32	121.7 348.6 Rwy 5L-23R
				120.1	



VGSI and ILS glidepath not coincident (VGSI Angle 3.00/TCH 62).

PECIT I-RDU 13.5 RADAR

PURME I-RDU 7.5 RADAR

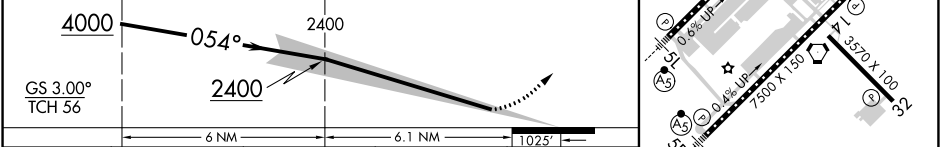
1000

2600

RDU R-092

ZEBUL

Use I-RDU DME when on the localizer course.



CATEGORY	A	B	C	D
S-ILS 5R	SA CAT I	RA 230/14 150	DA 570	
S-ILS 5R	SA CAT II	RA 183/12 100	DA 520	

SA CATEGORY I & II ILS - SPECIAL AIRCREW & AIRCRAFT CERTIFICATION REQUIRED

