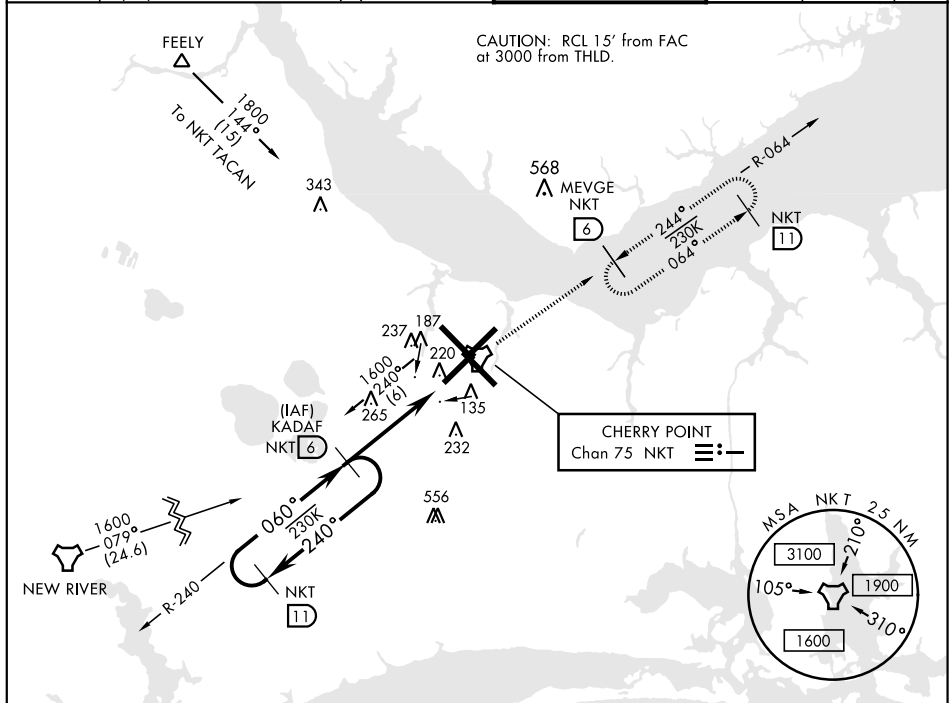


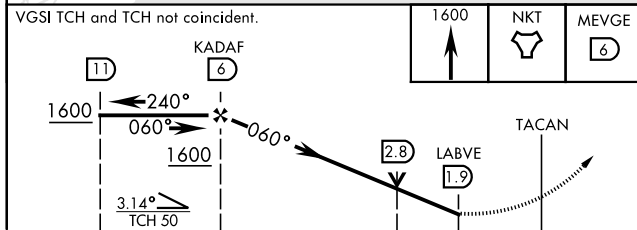
TACAN RWY 5R

TACAN NKT Chan 75		APCH CRS 060°		Rwy Idg 8188 TDZE 27 Arpt Elev 29		AL-471 [USN] CHERRY POINT MCAS (CUNNINGHAM FLD) (KNKT)				
<div>▼</div>						MISSED APPROACH: Climb to 1600 direct NKT TACAN, then direct MEVGE and hold.				
ATIS		CHERRY POINT APP CON				CHERRY POINT TOWER		GND CON	CLNC DEL	ASR/ PAR
127.475	(E) 119.75	360.775	(obv 2600')					128.625	125.95	
244.875	(E) 132.575	299.6	(at/blw 2600')			121.3	340.2	239.025	316.125	
	(W) 119.35	377.175	(N) 124.1	268.7						

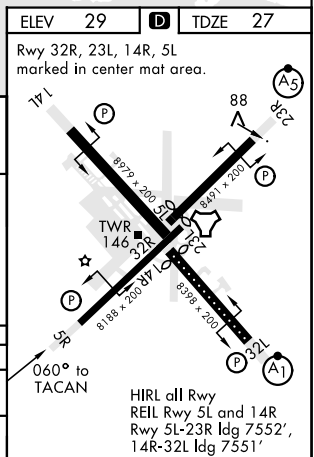


EMERG SAFE ALT 100 NM 4100

VGSI TCH and TCH not coincident.



CATEGORY		A		B		C		D	
S-5R		500-1	473	(500-1)		500-1 $\frac{3}{8}$		473	(500-1 $\frac{3}{8}$)
C CIRCLING		580-1	551	(600-1)		600-1 $\frac{1}{2}$		571	(600-2)
						571 (600-1 $\frac{1}{2}$)			571 (600-2)



CHERRY POINT, NORTH CAROLINA

34°54'N-76°53'W CHERRY POINT MCAS (CUNNINGHAM FLD) (KNKT)

Amdt 4 10SEP20

TACAN RWY 5R

SE-2, 31 DEC 2020 to 28 JAN 2021

SE-2, 31 DEC 2020 to 28 JAN 2021