

CHERRY POINT, NORTH CAROLINA

RNAV (GPS) RWY 14L

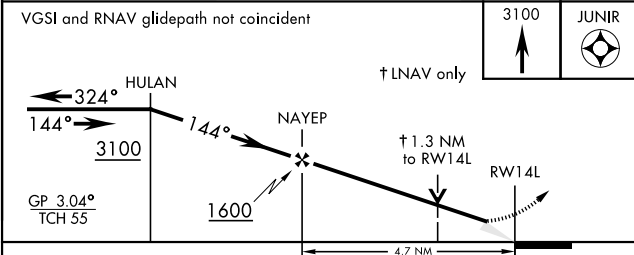
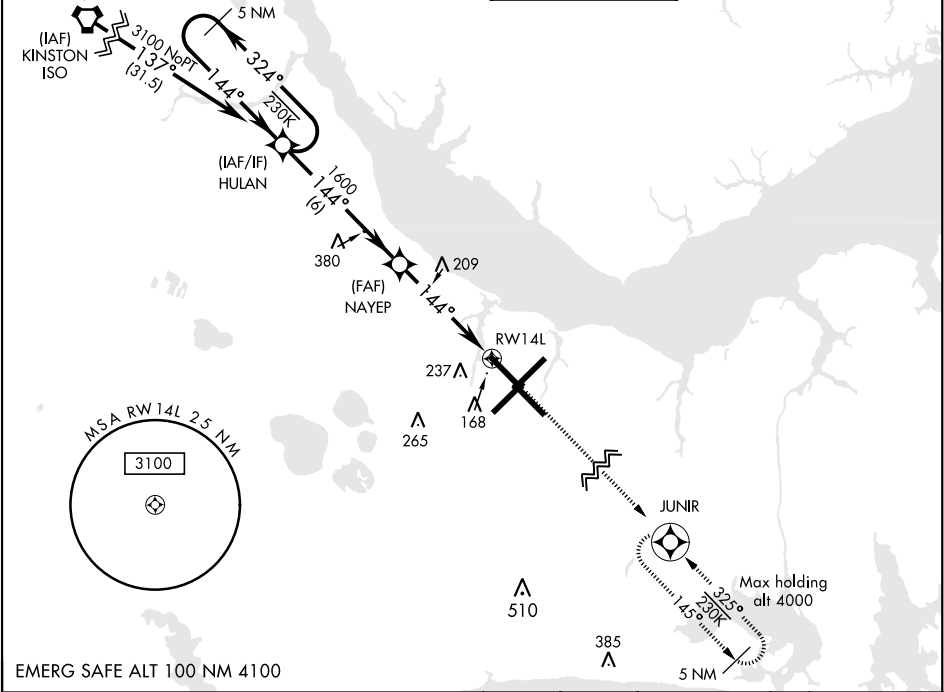
WAAS	APCH CRS	Rwy Idg	8979
Chan 41117	144°	TDZE	26
W14A		Arpt Elev	29

AL-471 [USN] CHERRY POINT MCAS (CUNNINGHAM FLD) (KNKT)

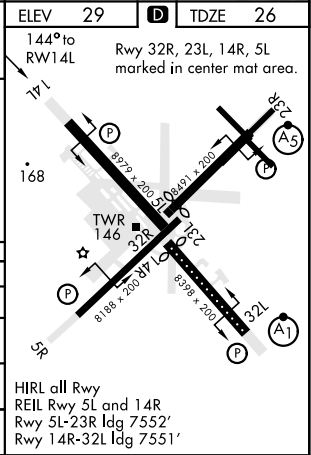
RNP APCH
▼ For uncompensated Baro-VNAV systems, LNAV/VNAV NA below -15°C (5°F) or above 54°C (129°F).

MISSED APPROACH: Climb to 3100 direct JUNIR and hold.				
	CHERRY POINT TOWER	GND CON	CLNC DEL	ASR/ PAR
	121.3 340.2	128.625 239.025	125.95 316.125	

ATIS	CHERRY POINT APP CON
127.475	(E) 119.75 360.775 (abv 2600')
244.875	(E) 132.575 299.6 (at/blw 2600')
	(W) 119.35 377.175 (N) 124.1 268.7



CATEGORY	A	B	C	D
LPV DA	226-¾		200	(200-¾)
LNAV/ VNAV DA	300-¾ 274 (300-¾)	311-¾ 285 (300-¾)	319-¾ 293 (300-¾)	330-¾ 304 (400-¾)
LNAV MDA	500-1	474 (500-1)	500-1¾	474 (500-1¾)
CIRCLING	580-1	551 (600-1)	600-1½ 571 (600-1½)	600-2 571 (600-2)



CHERRY POINT, NORTH CAROLINA

34° 54'N-76° 53'W

CHERRY POINT MCAS (CUNNINGHAM FLD) (KNKT)

Amtd 3 10SEP20

RNAV (GPS) RWY 14L

SE-2, 31 DEC 2020 to 28 JAN 2021

SE-2, 31 DEC 2020 to 28 JAN 2021