
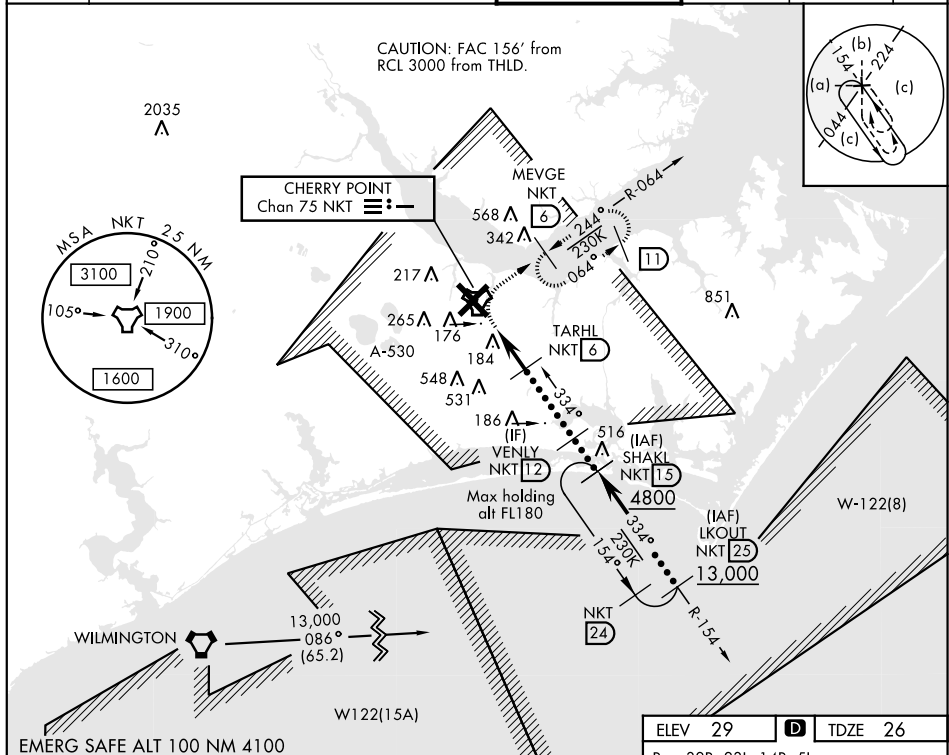


HI-TACAN Y RWY 32L

V * When ALS inop, increase vis to 1 3/8 miles.				ALSF-1 		MISSED APPROACH: Climbing right turn to 1600 direct MEVGE and hold.				
ATIS 127.475 244.875		CHERRY POINT APP CON (E) 119.75 360.775 (abv 2600') (E) 132.575 299.6 (at/blw 2600') (W) 119.35 377.175 (N) 124.1 268.7				CHERRY POINT TOWER 121.3 340.2		GND CON 128.625 239.025	CLNC DEL 125.95 316.125	ASR/ PAR



The diagram illustrates the intersection of four runways: 32R, 23L, 14R, and 5L. Key features include:

- Runway 32R:** Length 1600m, width 60m. A TACAN station is located at its end.
- Runway 23L:** Length 2400m, width 60m. A VENLY station is located at its end.
- Runway 14R:** Length 1600m, width 60m. A TARHL station is located at its end.
- Runway 5L:** Length 2400m, width 60m. An OSHEN station is located at its end.
- Navigation Aids:** TACAN, VENLY, TARHL, and OSHEN are all VORTAC stations.
- Distances:** The distance between the TACAN and VENLY stations is 4.8 NM. The distance between the TACAN and TARHL stations is 1.2 NM. The distance between the TACAN and OSHEN stations is 2.4 NM.
- Angles:** The angle between the centerlines of Runway 32R and Runway 23L is 33.4°. The angle between the centerline of Runway 32R and the centerline of Runway 14R is 2.95°.

CATEGORY	C	D	E
S-32L*	480- $\frac{1}{8}$	454	(500- $\frac{1}{8}$ )
CIRCLING	600-1 $\frac{1}{2}$ 571 (600-1 $\frac{1}{2}$ )	600-2 571 (600-2)	700-2 $\frac{1}{2}$ 671 (700-2 $\frac{1}{2}$ )

HIREL all Rwy REIL Rwy 5L and 14R Rwy 5L-23R Idg 7552', 14R-32L Idg 7551'

33.4° to TACAN

CHERRY POINT, NORTH CAROLINA	34° 54' N-76° 53' W	CHERRY POINT MCAS (CUNNINGHAM FLD) (KNKT)
------------------------------	---------------------	---

## HI-TACAN Y RWY 32L