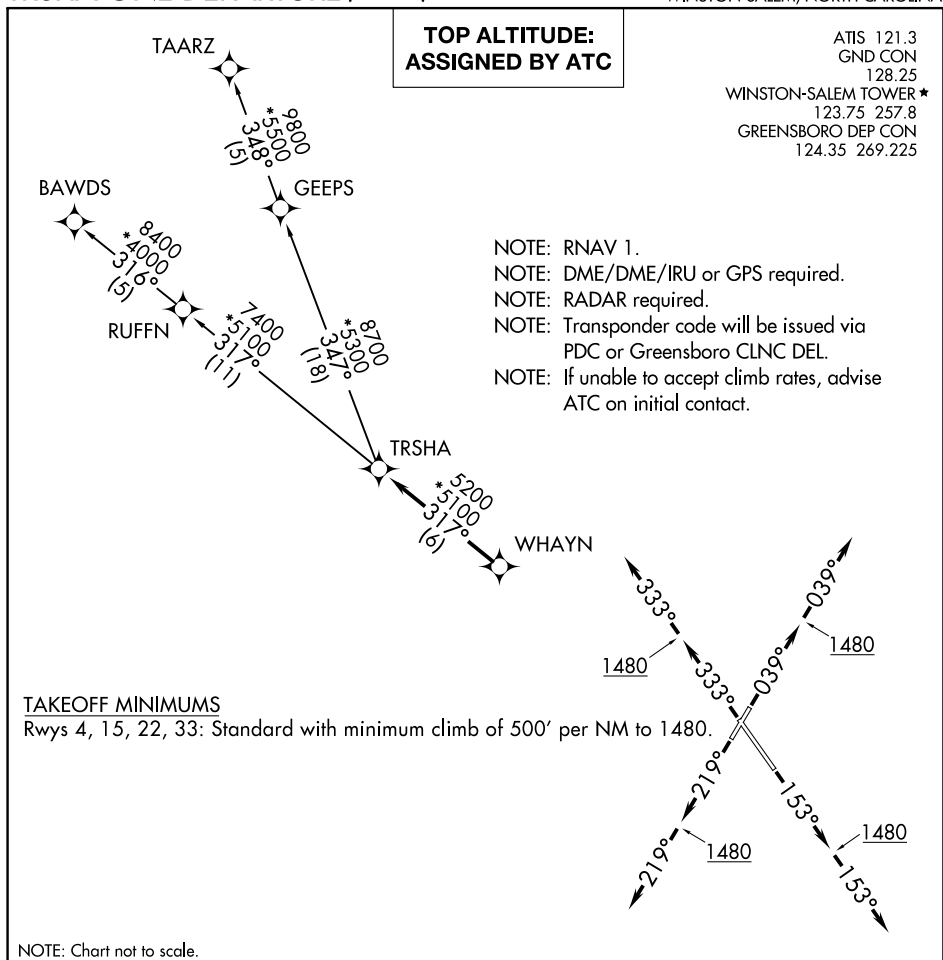


TRSHA ONE DEPARTURE (RNAV)

WINSTON-SALEM, NORTH CAROLINA



DEPARTURE ROUTE DESCRIPTION

TAKEOFF RWY 4: Climb heading 039° to 1480, then on heading 039°. Thence. . .
 TAKEOFF RWY 15: Climb heading 153° to 1480, then on heading 153°. Thence. . .
 TAKEOFF RWY 22: Climb heading 219° to 1480, then on heading 219°. Thence. . .
 TAKEOFF RWY 33: Climb heading 333° to 1480, then on heading 333°. Thence. . .

... expect RADAR vectors to WHAYN, then on track 317° to TRSHA, then on assigned transition. Maintain altitude assigned by ATC. Expect clearance to filed altitude within ten (10) minutes after departure.

BAWDS TRANSITION (TRSHA1.BAWDS)

TAARZ TRANSITION (TRSHA1.TAARZ)

TRSHA ONE DEPARTURE (RNAV)

(TRSHA1.TRSHA) 05JAN17

WINSTON-SALEM, NORTH CAROLINA

SMITH REYNOLDS (INT)