


APP CRS
152°

Rwy Idg
TDZE
Apt Elev

6069
968
969

RNAV (GPS) RWY 15
SMITH REYNOLDS (INT)

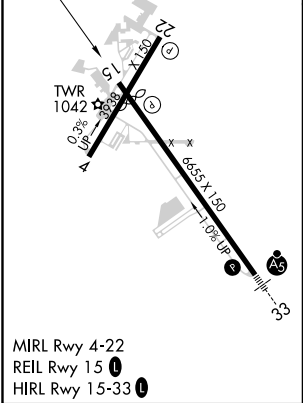
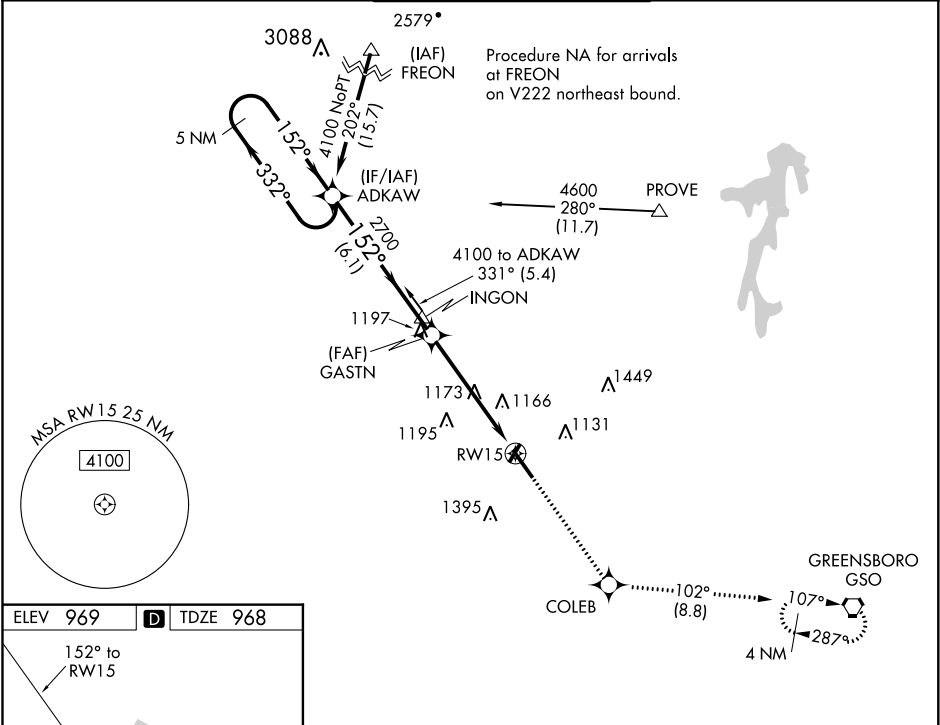
RNP APCH.

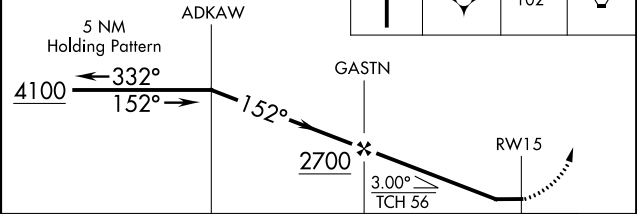


When local altimeter setting not received, use Piedmont Triad Intl altimeter setting and increase all MDA 40 feet and Circling Cat D visibility ¼ mile. Circling Rwy 4, 22 NA at night. Rwy 15 helicopter visibility reduction below ¾ SM NA.

MISSED APPROACH:
Climb to 3000 direct COLEB and on track 102° to GSO VORTAC and hold.

ATIS 121.3	GREENSBORO APP CON 124.35 269.225	WINSTON-SALEM TOWER ★ 123.75 (CTAF) 0 257.8	GND CON 128.25	UNICOM 122.95
----------------------	---	---	--------------------------	-------------------------



VGSI and descent angles not coincident (VGSI Angle 3.00/TCH 38).			
3000	COLEB	tr 102°	GSO
			
CATEGORY	A	B	C
LNAV MDA	1440-1	472 (500-1)	1440-1 3/8 472 (500-1 3/8)
CIRCLING	1480-1 511 (600-1)	1580-1 611 (700-1)	1580-1 3/4 611 (700-1 3/4) 1740-2 1/2 771 (800-2 1/2)