

WAAS CH <b>86599</b> <b>W06A</b>	APP CRS <b>058°</b>	Rwy Idg <b>8016</b> TDZE <b>28</b> Apt Elev <b>32</b>
--	------------------------	---

RNAV (GPS) RWY 6  
WILMINGTON INTL (ILM)

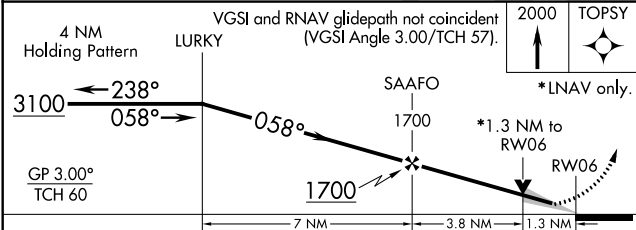
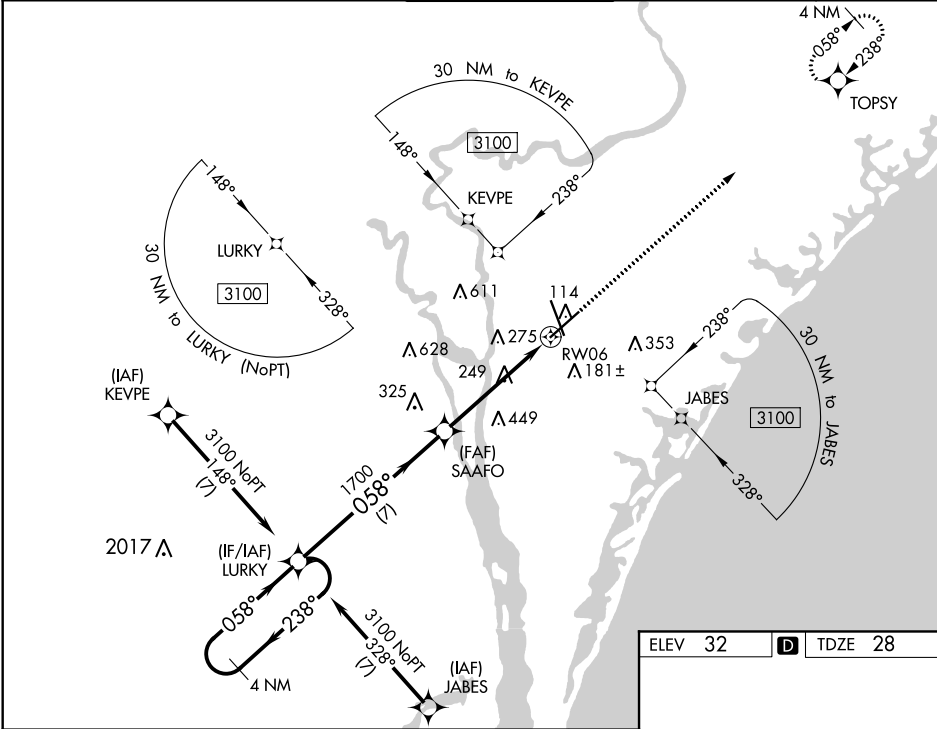


ASR

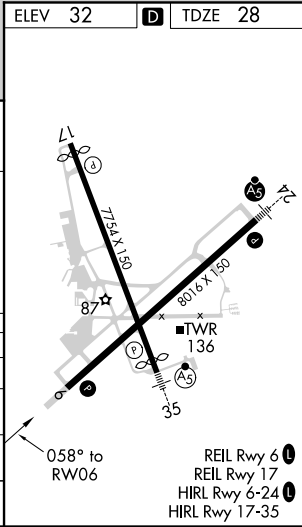
For uncompensated Baro-VNAV systems, LNAV/VNAV  
NA below -7°C (20°F) or above 54°C (130°F).  
DME/DME RNP-0.3 NA.

MISSED APPROACH: Climb to  
2000 direct TOPSY and hold.

ATIS <b>124.975</b>	WILMINGTON APP CON ★ <b>118.25 284.65</b> (164°-343°) <b>135.75 317.425</b> (344°-163°)	WILMINGTON TOWER ★ <b>119.9</b> (CTAF) <b>0 239.3</b>	GND CON <b>121.9 348.6</b>	UNICOM <b>122.95</b>
------------------------	---	--	-------------------------------	-------------------------



CATEGORY	A	B	C	D
LPV DA	228/40 200 (200-¾)			
LNAV/VNAV DA	434/60 406 (500-1¼)			
LNAV MDA	500/55 472 (500-1)		500-1¾ 472 (500-1¾)	
CIRCLING	560-1 528 (600-1)		720-2 688 (700-2) 920-3 888 (900-3)	



SE-2, 31 DEC 2020 to 28 JAN 2021

SE-2, 31 DEC 2020 to 28 JAN 2021