
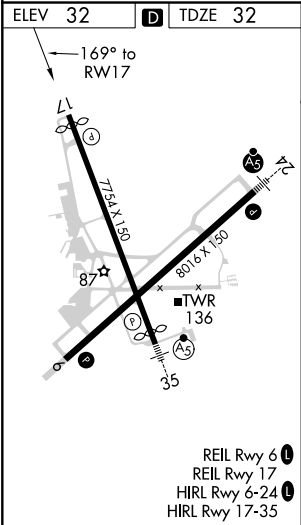
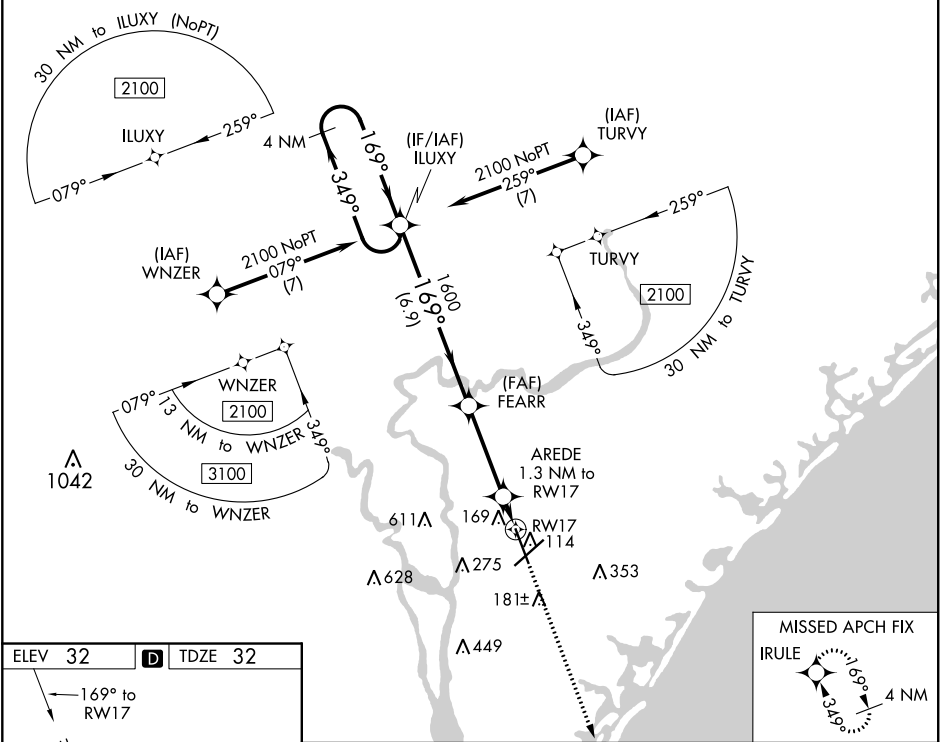



WAAS CH 90499 W17A	APP CRS 169°	Rwy Idg TDZE 32 Apt Elev 32
--	------------------------	---

RNAV (GPS) RWY 17
WILMINGTON INTL (ILM)

 ASR	For uncompensated Baro-VNAV systems, LNAV/VNAV NA below -7°C (20°F) or above 54°C (130°F). DME/DME RNP-0.3 NA. Rwy 17 helicopter visibility reduction below ¾ SM NA.	MISSED APPROACH: Climb to 1700 direct IRULE and hold.
--	--	---

ATIS 124.975	WILMINGTON APP CON ★ 118.25 284.65 (164°-343°) 135.75 317.425 (344°-163°)	WILMINGTON TOWER ★ 119.9 (CTAF) 0 239.3	GND CON 121.9 348.6	UNICOM 122.95
------------------------	---	--	-------------------------------	-------------------------



4 NM Holding Pattern		ILUXY		FEARR		AREDE 1.3 NM to RW17		RW17	
2100		←349° 169°→		1600		*480		*LNAV only.	
GP 3.00° TCH 50				6.9 NM		3.5 NM		1.3 NM	
CATEGORY	A	B	C	D					
LPV DA	369-1½ 337 (400-1½)								
LNAV/ VNAV DA	405-1¼ 373 (400-1¼)								
LNAV MDA	420-1 388 (400-1)				420-1½ 388 (400-1½)				
 CIRCLING	560-1 528 (600-1)				720-2 688 (700-2)			920-3 888 (900-3)	

SE-2, 31 DEC 2020 to 28 JAN 2021

SE-2, 31 DEC 2020 to 28 JAN 2021