

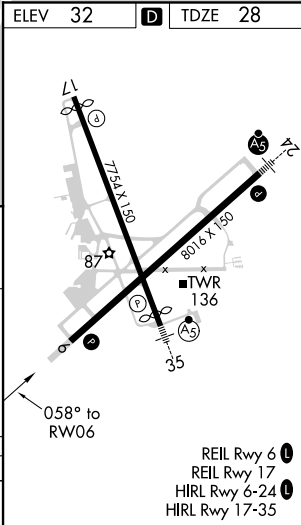
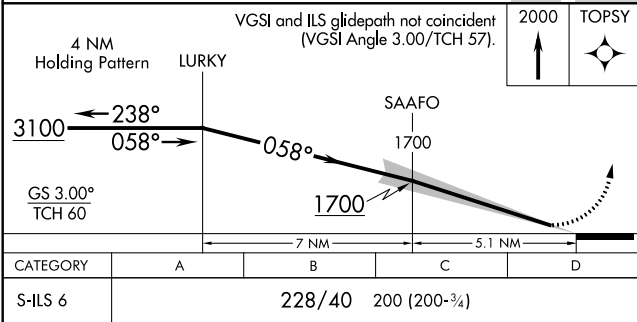
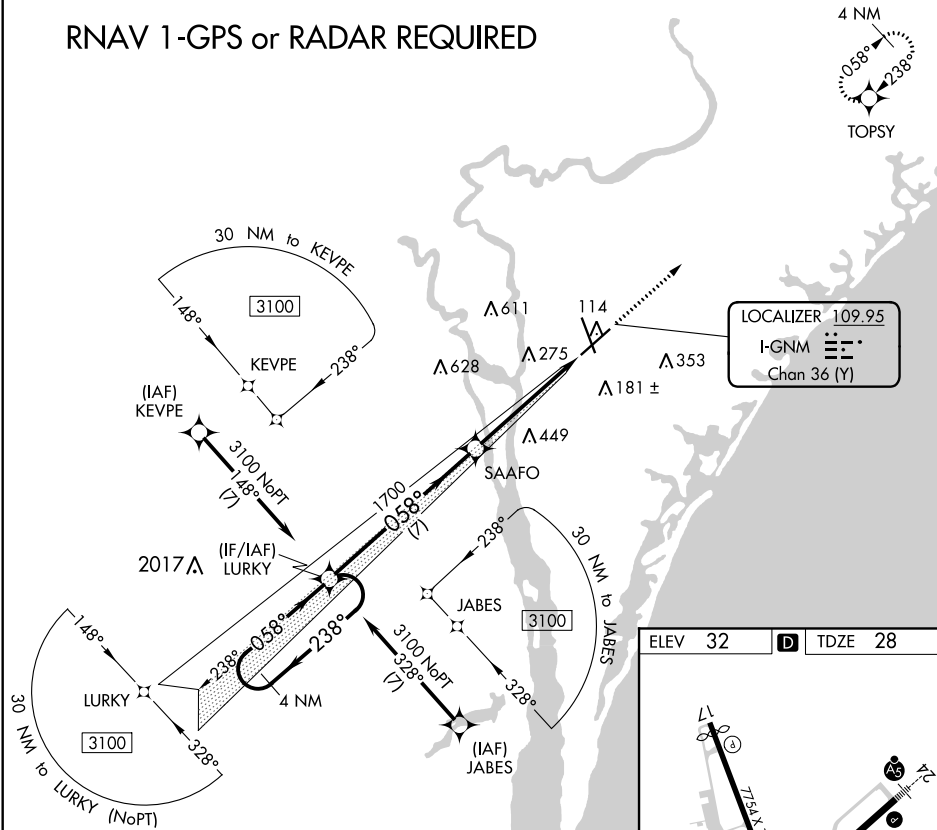
LOC/DME I-GNM	APP CRS	Rwy Idg	8016
<b>109.95</b>	<b>058°</b>	TDZE	<b>28</b>
Chan <b>36</b> (Y)		Apt Elev	<b>32</b>

ILS Z RWY 6  
WILMINGTON INTL (ILM)

ASR	RNAV 1-GPS required.	MISSED APPROACH: Climb to 2000 direct TOPSY and hold.
-----	----------------------	---

ATIS <b>124.975</b>	WILMINGTON APP CON ★ <b>118.25 284.65</b> (164°-343°) <b>135.75 317.425</b> (344°-163°)	WILMINGTON TOWER ★ <b>119.9</b> (CTAF) <b>0 239.3</b>	GND CON <b>121.9 348.6</b>	UNICOM <b>122.95</b>
------------------------	---	--	-------------------------------	-------------------------

RNAV 1-GPS or RADAR REQUIRED



SE-2, 31 DEC 2020 to 28 JAN 2021

SE-2, 31 DEC 2020 to 28 JAN 2021