

LOC I-GMX <b>111.55</b>	APP CRS <b>238°</b>	Rwy Idg <b>8016</b> TDZE <b>26</b> Apt Elev <b>32</b>	<b>ILS Y RWY 24</b> (SA CAT I & II) WILMINGTON INTL (ILM)
----------------------------	------------------------	---	--

ADF required. SA CAT I: Requires specific OPSPEC, MSPEC, or LOA approval and use of HUD to DH. SA CAT II: Reduced lighting: requires specific OPSPEC, MSPEC, or LOA approval and use of autoland or HUD to touchdown. Procedure NA when tower closed.

ASR

MALSR

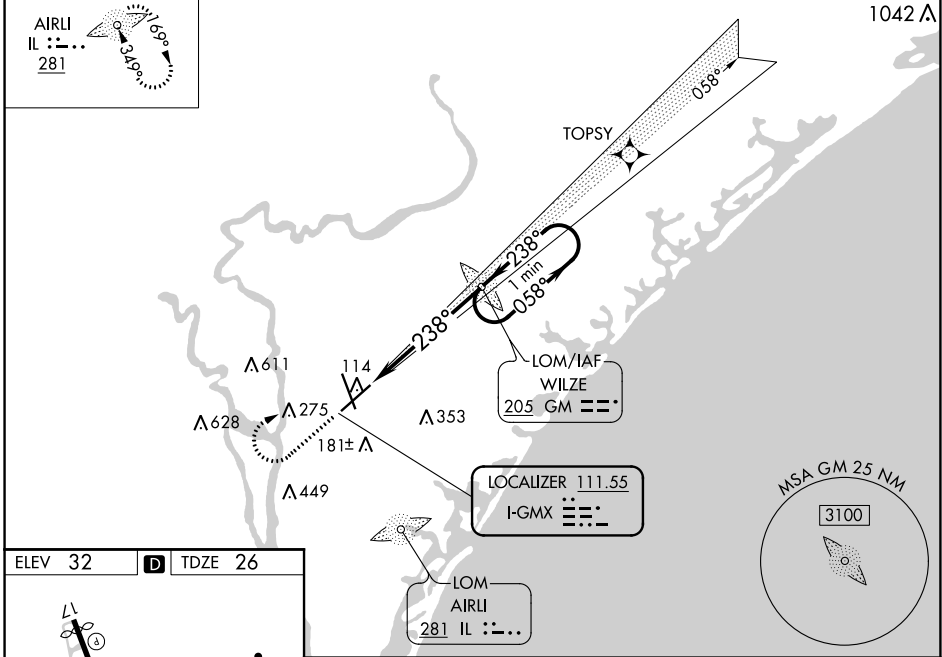
MISSED APPROACH: Climb to 500 then climbing right turn to 1800 direct WILZE LOM and hold.

ATIS <b>124.975</b>	WILMINGTON APP CON ★ <b>118.25 284.65</b> (164°-343°) <b>135.75 317.425</b> (344°-163°)	WILMINGTON TOWER ★ <b>119.9</b> (CTAF) <b>0 239.3</b>	GND CON <b>121.9 348.6</b>	UNICOM <b>122.95</b>
------------------------	---	--	-------------------------------	-------------------------

ALTERNATE MISSED  
APCH FIX

AIRLI  
IL : - . .  
281

RNAV 1-GPS or RADAR REQUIRED



ELEV 32

D

TDZE 26

HIRL Rwy 17-35

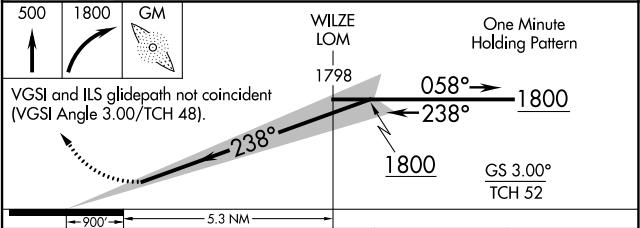
HIRL Rwy 6-24

REIL Rwy 17

REIL Rwy 6

FAF to MAP 5.3 NM

Knots	60	90	120	150	180
Min:Sec	5:18	3:32	2:39	2:07	1:46



CATEGORY	A	B	C	D
S-ILS 24	SA CAT I	RA 151/14	150 DA 176	
S-ILS 24	SA CAT II	RA 108/12	100 DA 126	

SA CATEGORY I & II ILS SPECIAL AIRCREW  
& AIRCRAFT CERTIFICATION REQUIRED