

SUMTER, SOUTH CAROLINA

HI-TACAN Z RWY 4L

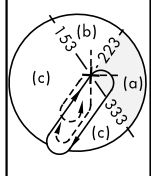
TACAN	SSC	APCH CRS	Rwy Idg	10,014	8014		
Chan	38	043°	TDZE	240	236	JAL-409 [USAF]	SHAW AFB (KSSC)
			Arpt Elev	241	241		

<p><b>▼</b> * When ALS inop, increase vis to 1 ½ miles.</p>	<p>ALSF-1</p> 	<p><b>MISSED APPROACH:</b> Climbing to 2000, intercept SSC TACAN R-042 to GABLE and hold.</p>
---	---	---

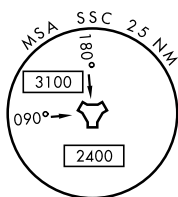
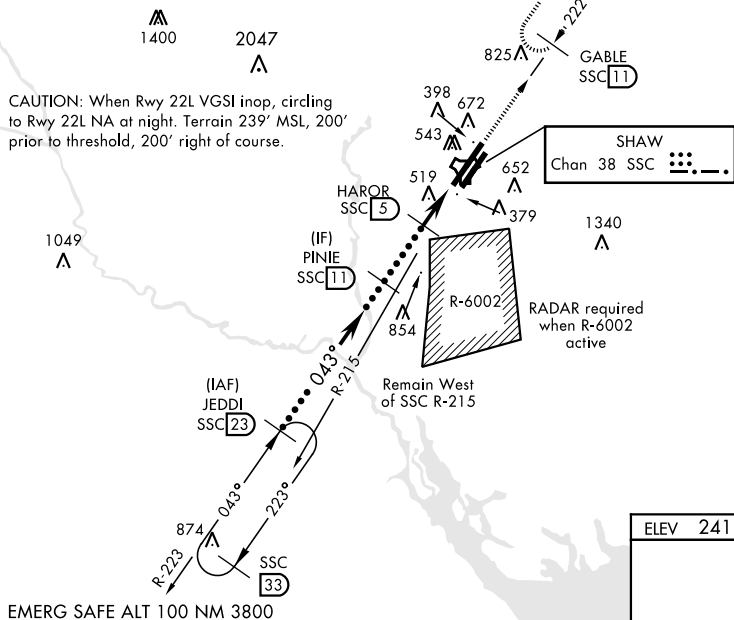
ATIS ★ 132.125 270.1	SHAW APP CON 125.4 318.1	SHAW TOWER ★ 126.65 254.25	GND CON 126.1 275.8	CLNC DEL 126.1 275.8
-------------------------	-----------------------------	-------------------------------	------------------------	-------------------------

When VGSI inop, procedure NA at night.  
Terrain 242' MSL, 200' prior to threshold,  
816' left of course.

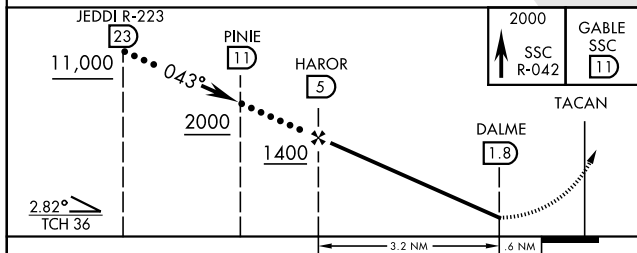
USAF Only: When VGSI inop, straight in  
Rwy 4L authorized at night with MAJCOM  
A3 approval.



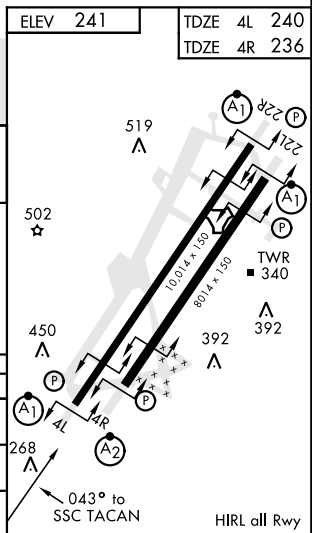
CAUTION: When Rwy 22L VGSI inop, circling to Rwy 22L NA at night. Terrain 239' MSL, 200' prior to threshold, 200' right of course.



EMERG SAFE ALT 100 NM 3800



CATEGORY	C	D	E
S-4L *	800/60	560 (600-1½)	
SIDESTEP 4R *	800-1⅜	564 (600-1⅜)	
<b>C</b> CIRCLING	1000-2¼ 759 (800-2¼)	1000-2½ 759 (800-2½)	1000-2¾ 759 (800-2¾)



SUMTER, SOUTH CAROLINA

33° 58' N-80° 28' W

SHAW AFB (KSSC)

Amdt 1 10OCT19

HI-TACAN Z RWY 4L

SE-2, 31 DEC 2020 to 28 JAN 2021