

WAAS CH <b>93837</b> <b>W19A</b>	APP CRS <b>186°</b>	Rwy Idg TDZE Apt Elev	<b>5393</b> <b>1048</b> <b>1048</b>
--	------------------------	-----------------------------	---

RNAV (GPS) RWY 19

GREENVILLE DOWNTOWN (GMU)

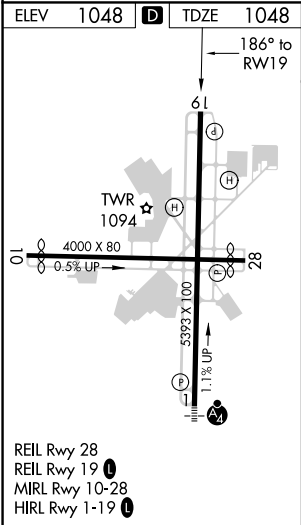
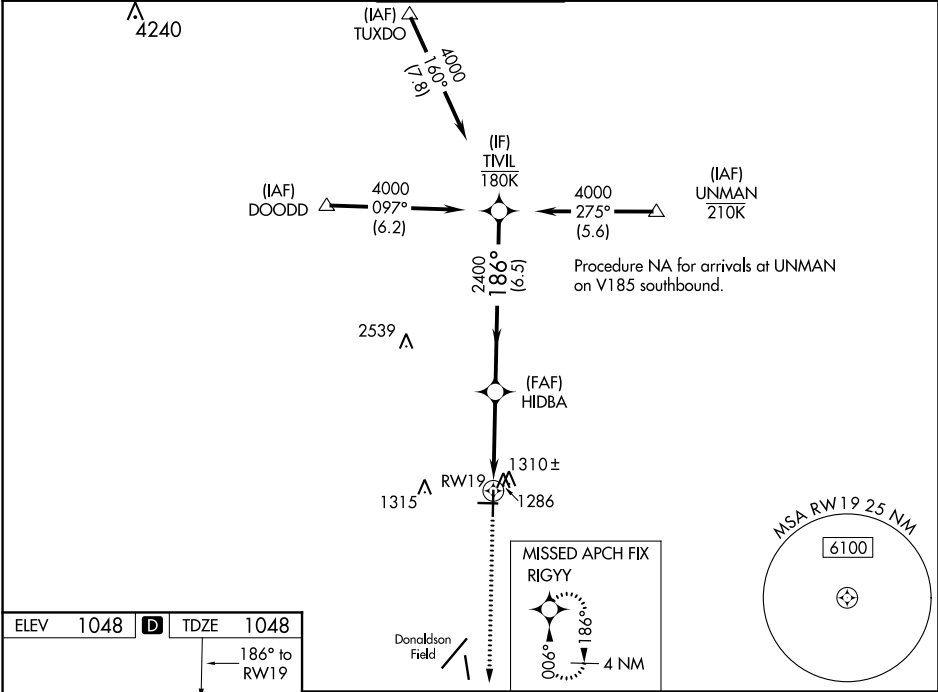
⚠



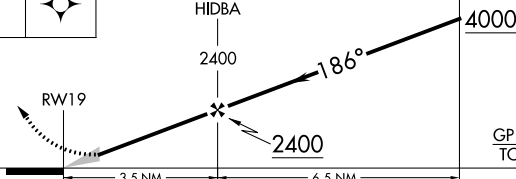

For uncompensated Baro-VNAV systems, LNAV/VNAV NA below -6°C (22°F) or above 54°C (130°F).  
DME/DME RNP-0.3 NA. When local altimeter setting not received, use Greer altimeter setting and increase all DA 29 feet and all MDA 40 feet; increase LPV and LNAV/VNAV all Cats visibility 1⁄8 mile, increase LNAV Cats C/D and Circling Cat C visibility 1⁄4 mile.

MISSED APPROACH:

Climb to 3000 direct RIGYY and hold.

ATIS ★ <b>127.075</b>	GREER APP CON ★ <b>118.8 270.275</b>	GREENVILLE TOWER ★ <b>119.9 (CTAF) 0 257.7</b>	GND CON <b>121.25</b>	UNICOM <b>122.95</b>
--------------------------	---	---	--------------------------	-------------------------



3000	RIGYY				TVIL
					
					
CATEGORY		A	B	C	D
LPV	DA	1373-1 325 (400-1)			NA
LNAV/VNAV	DA	1480-1¼ 432 (500-1¼)			NA
LNAV	MDA	1560-1 512 (600-1)		1560-1⅔ 512 (600-1⅔)	
 CIRCLING		1620-1 572 (600-1)		1780-2 732 (800-2)	1860-2¾ 812 (900-2¾)