

WAAS CH 61035 W32A	APP CRS 323°	Rwy Idg 6380 TDZE 902 Apt Elev 926
--	------------------------	---

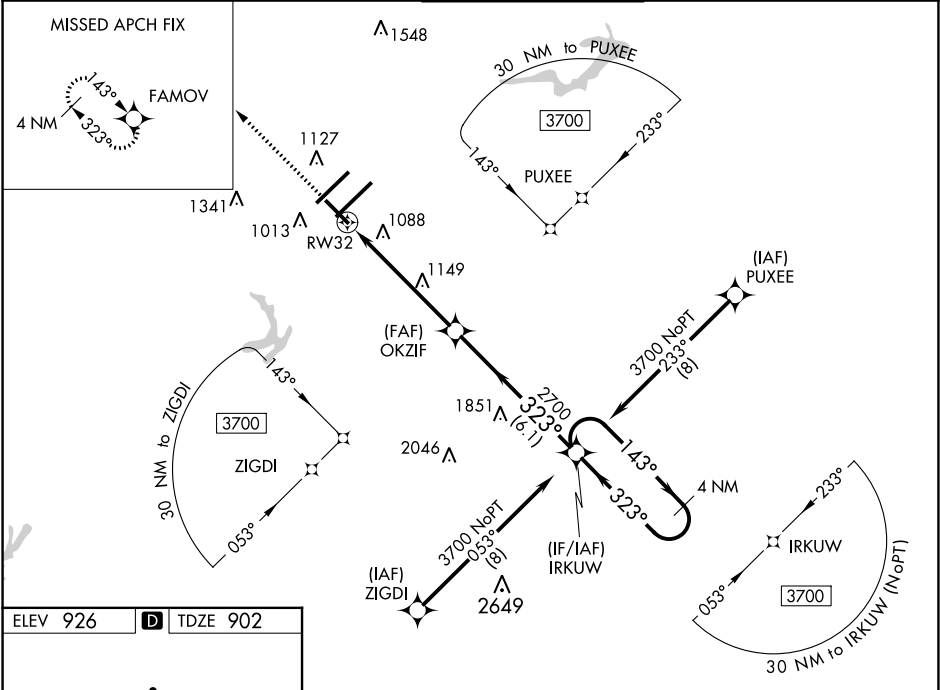
RNAV (GPS) RWY 32

PIEDMONT TRIAD INTL (GSO)

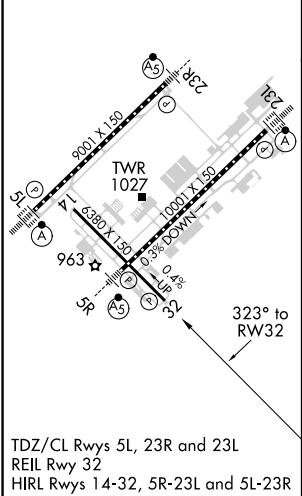
⚠ For uncompensated Baro-VNAV systems, LNAV/VNAV NA below -10°C (14°F) or above 54°C (130°F). DME/DME RNP-0.3 NA. Baro-VNAV and VDP NA when using Smith Reynolds altimeter setting. When local altimeter setting is not received use Smith Reynolds altimeter setting: increase all DA 38 feet and all MDA 40 feet, increase LNAV/VNAV all Cats and LNAV Cats C/D visibilities ½ mile, increase Circling Cats C/D visibility ¼ mile.



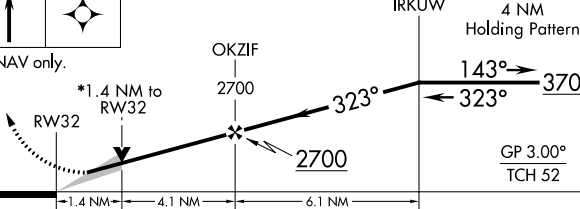

MISSED APPROACH:
Climb to 3700 direct
FAMOV and hold.

D-ATIS 128.55	GREENSBORO APP CON 124.35 269.225 (250°-049°) 126.6 327.075 (050°-249°)	GREENSBORO TOWER 119.1 290.325	GND CON 121.9 348.6	CLNC DEL 121.75
-------------------------	---	--	-------------------------------	---------------------------



ELEV 926	D	TDZE 902
----------	----------	----------



3700	FAMOV				
					
*LNAV only.					
					
CATEGORY		A	B	C	D
LPV DA		1102- ³ / ₄ 200 (200- ³ / ₄)			
LNAV/ VNAV	DA	1419-1 ³ / ₄ 517 (500-1 ³ / ₄)			
LNAV MDA		1400-1	498 (500-1)	1400-1 ³ / ₈	498 (500-1 ³ / ₈)
 CIRCLING		1440-1	514 (600-1)	1700-2 ¹ / ₄ 774 (800-2 ¹ / ₄)	1700-2 ¹ / ₂ 774 (800-2 ¹ / ₂)