

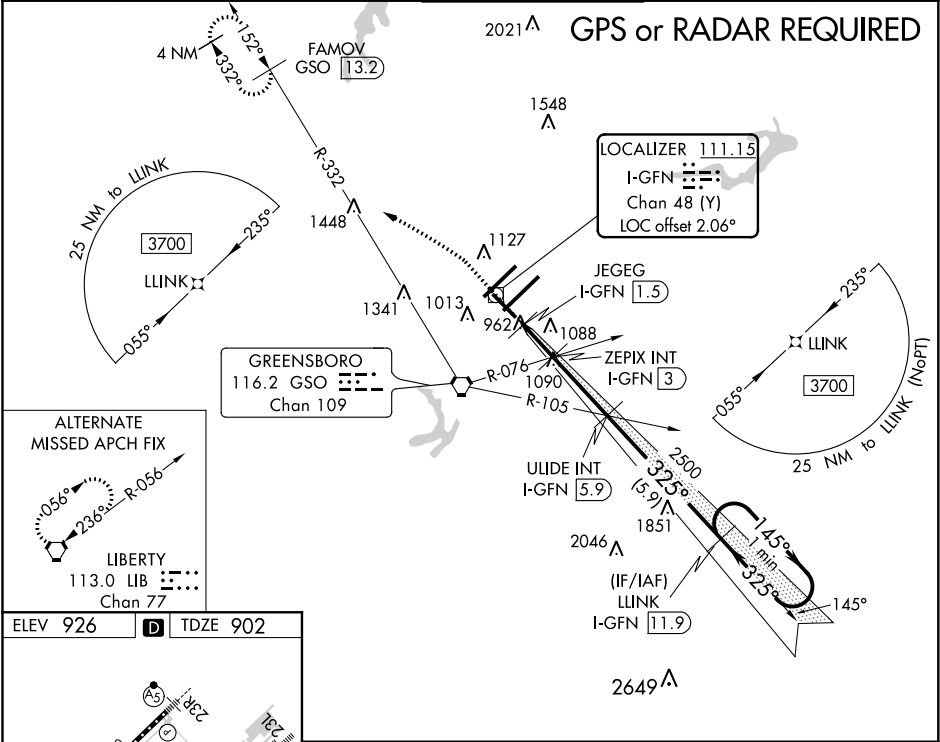
LOC/DME I-GFN 111.15 Chan 48 (Y)	APP CRS 325°	Rwy Idg TDZE 902 Apt Elev 926
---	------------------------	---

ILS Y or LOC/DME Y RWY 32
PIEDMONT TRIAD INTL (GSO)

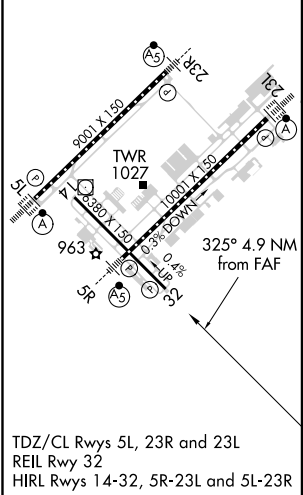
⚠ DME required. When local altimeter setting is not received use Smith Reynolds altimeter setting and increase DA to 1188 feet, all MDA 40 feet, increase S-ILS 32 all Cats visibility 1/8 mile and S-LOC 32 Cats C/D 1/8 mile, and Circling Cats C/D 1/4 mile.

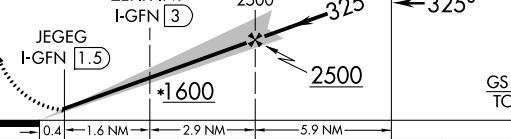
MISSED APPROACH: Climb to 1400 then climbing left turn to 3700 on heading 307° and GSO VORTAC R-332 to FAMOV/GSO 13.2 DME and hold.

D-ATIS 128.55	GREENSBORO APP CON 124.35 269.225 (250°-049°) 126.6 327.075 (050°-249°)	GREENSBORO TOWER 119.1 290.325	GND CON 121.9 348.6	CLNC DEL 121.75
-------------------------	---	--	-------------------------------	---------------------------



ELEV 926	D	TDZE 902
----------	----------	----------



1400 ↑	3700 hdg 307°	GSO R-332	FAMOV GSO 13.2	ULIDE INT I-GFN 5.9	LLINK I-GFN 11.9	One Minute Holding Pattern	
*LOC only.							
							
CATEGORY	A		B		C		D
S-ILS 32			1152-3/4		250 (300-3/4)		
S-LOC 32	1220-1		318 (400-1)		1220-7/8		318 (400-7/8)
C CIRCLING	1440-1		514 (600-1)		1700-2 1/4 774 (800-2 1/4)		1700-2 1/2 774 (800-2 1/2)

SE-2, 31 DEC 2020 to 28 JAN 2021

SE-2, 31 DEC 2020 to 28 JAN 2021