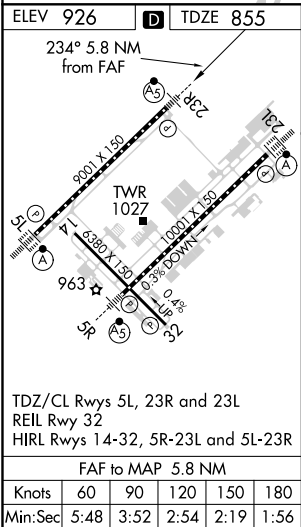
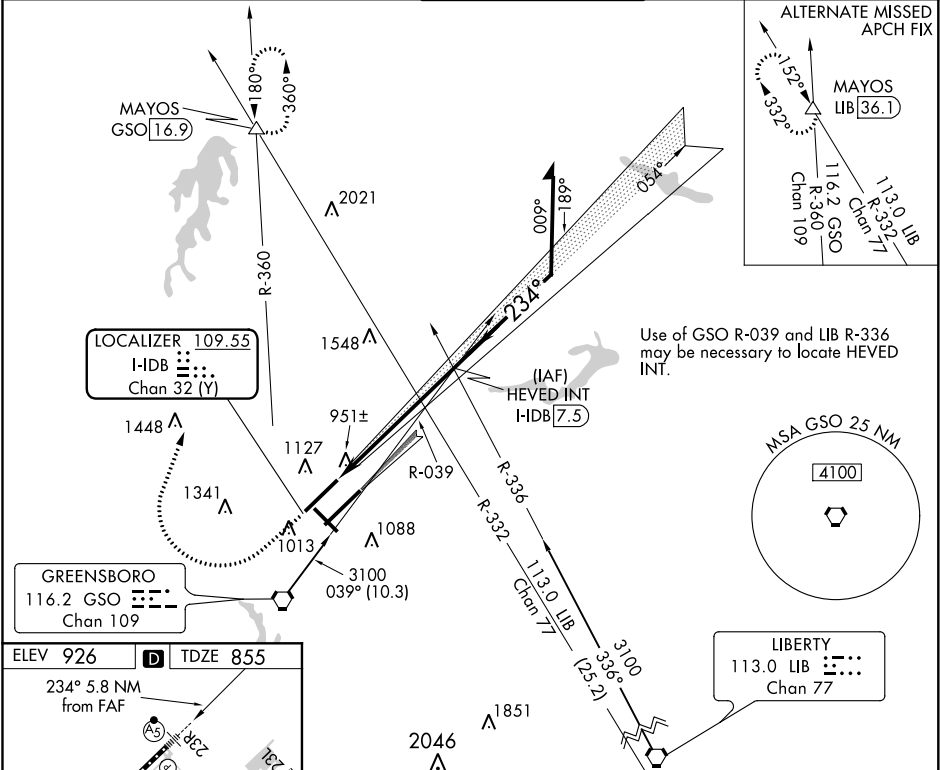


LOC/DME	I-DB	APP CRS	Rwy Idg	9000
109.55		234°	TDZE	855
Chan 32 (Y)			Apt Elev	926

ILS or LOC RWY 23R
PIEDMONT TRIAD INTL (GSO)

<p>Simultaneous approach authorized with Rwy 23L.</p>	<p>MALSR</p>	<p>MISSED APPROACH: Climb to 1500 then climbing right turn to 3100 on heading 015° and GSO VORTAC R-360 to MAYOS INT/GSO 16.9 DME and hold.</p>
---	--------------	---

D-ATIS 128.55	GREENSBORO APP CON 124.35 269.225 (250°-049°) 126.6 327.075 (050°-249°)	GREENSBORO TOWER 119.1 290.325	GND CON 121.9 348.6	CLNC DEL 121.75
------------------	---	-----------------------------------	------------------------	--------------------



1500	3100	GSO R-360	MAYOS	HEVED INT I-DB 7.5	Remain within 10 NM
VGS and ILS glidepath not coincident (VGS Angle 3.00/TCH 72).					
I-DB 1.7, I-DB 2.6, I-DB 7.5, 2800, 3100, 054°, 234°, 2800, GS 3.00° TCH 55					
1 NM, 4.8 NM					
CATEGORY	A	B	C	D	
S-ILS 23R	1055/18 200 (200-1/2)				
S-LOC 23R	1240/24 385 (400-1/2)				1240/40 385 (400-3/4)
CIRCLING	1440-1 514 (600-1)		1700-2 1/4 774 (800-2 1/4)		1700-2 1/2 774 (800-2 1/2)

SE-2, 31 DEC 2020 to 28 JAN 2021

SE-2, 31 DEC 2020 to 28 JAN 2021