

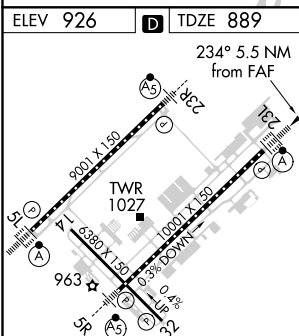
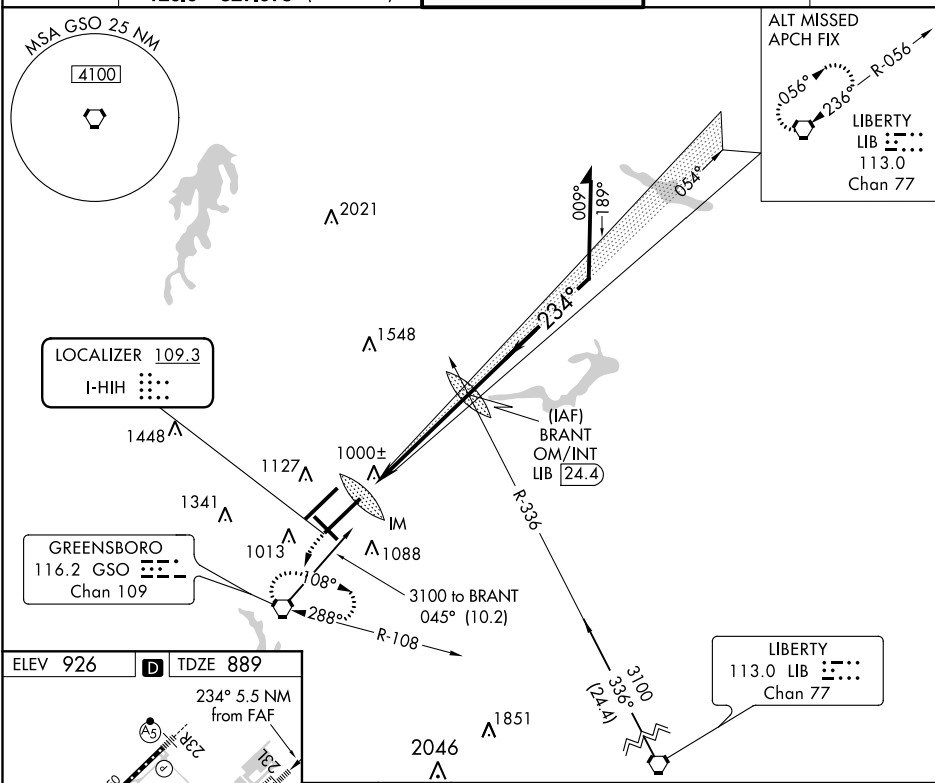
ILS or LOC RWY 23L
PIEDMONT TRIAD INTL (GSO)

ALSF-2

MISSED APPROACH: Climb to 1300 then climbing left turn to 3100 direct GSO VORTAC and hold, continue climb-in-hold to 3100.

GREENSBORO TOWER
119-1 290-325

GND CON
121.9 348.6

CLNC DEL
121-75

TDZ/CL Rwy 5L, 23R and 23L
REIL Rwy 32
HIRL Rwy 14-32, 5R-23L and 5L-23R

FAF to MAP 5.5 NM

Knots	60	90	120	150	180
Min:Sec	5:30	3:40	2:45	2:12	1:50

Amdt 9D 26MAR20

36°06'N-79°56'W

1300
↑

3100
↖

GSO

BRANT OM/INT
LIB 24.4

Remain within 10 NM

054°

3100

234°

2900

GS 3.00°
TCH 52

IM

0.1

5.4 NM

CATEGORY	A	B	C	D
S-ILS 23L	1089/18 200 (200-1/2)			
S-LOC 23L	1260/24	371 (400-1/2)	1260/40 371 (400-3/4)	
C CIRCLING	1440-1	514 (600-1)	1700-2 1/4 774 (800-2 1/4)	1700-2 1/2 774 (800-2 1/2)

PIEDMONT TRIAD INTL (GSO)
ILS or LOC RWY 23L

SE-2, 31 DEC 2020 to 28 JAN 2021