
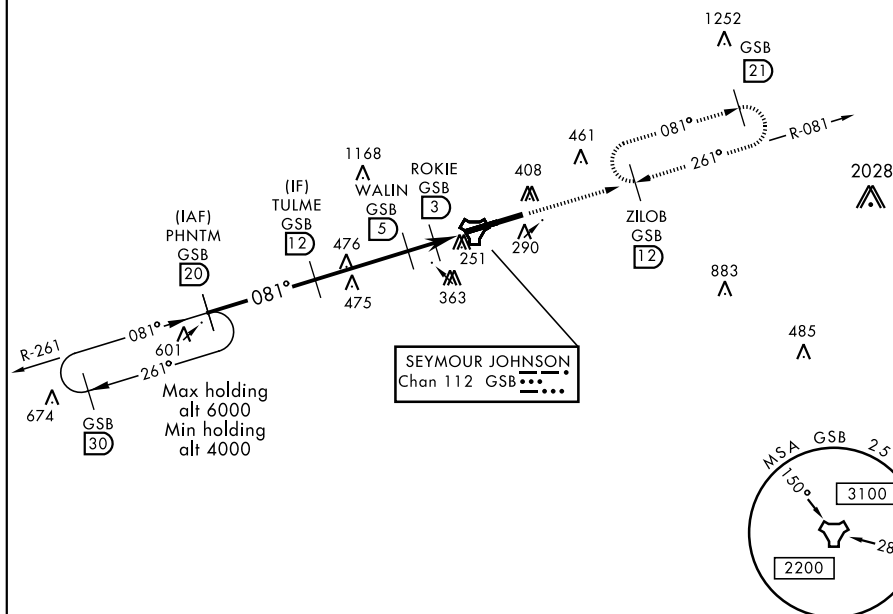


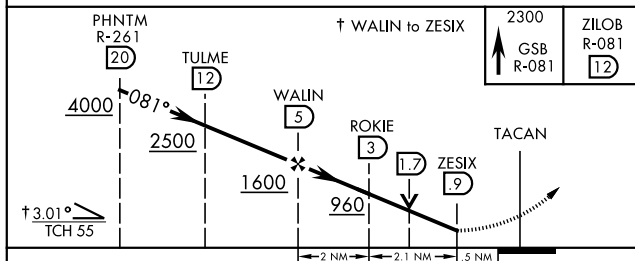
GOLDSBORO, NORTH CAROLINA

TACAN Y RWY 8

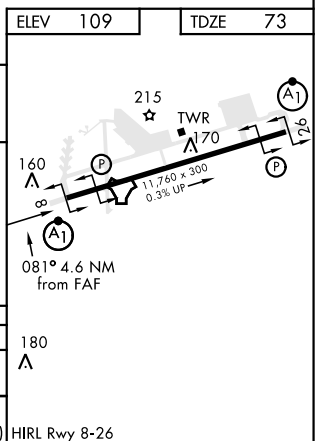
TACAN GSB Chan 112	APCH CRS 081°	Rwy Idg 11,760 TDZE 73 Arpt Elev 109	AL-169 [USAF]	SEYMOUR JOHNSON AFB (KGSB)	
▼ * When ALS inop, increase CAT AB RVR to 55, vis to 1 mile, CAT CDE vis to 1 1/2 miles. ** Circling N of Rwy 8-26 not authorized.			ALSF-1 	MISSED APPROACH: Climb to 2300 via GSB R-081 to ZILOB and hold.	
ATIS ★ 317.625	SEYMOUR JOHNSON APP CON 258°-110° 123.7 290.9 111°-257° 119.7 273.6	SEYMOUR JOHNSON TOWER ★ 126.25 370.875	GND CON 138.1 275.8		CLNC DEL 128.025 270.8



EMERG SAFE ALT 100 NM 3700



CATEGORY	A	B	C	D	E
S-8 *	560/24 487 (500-½)	560/50 487 (500-1)			
C CIRCLING **	620-1 511 (600-1)	680-1½ 571 (600-1½)	700-2 591 (600-2)	760-2½ 651 (700-2½)	



GOLDSBORO, NORTH CAROLINA

35°20'N-77°58'W

SFYMOUR JOHNSON AFB (KGSB)

Amdt 7 05DEC19

TACAN Y RWY 8

SE-2, 31 DEC 2020 to 28 JAN 2021

SE-2, 31 DEC 2020 to 28 JAN 2021