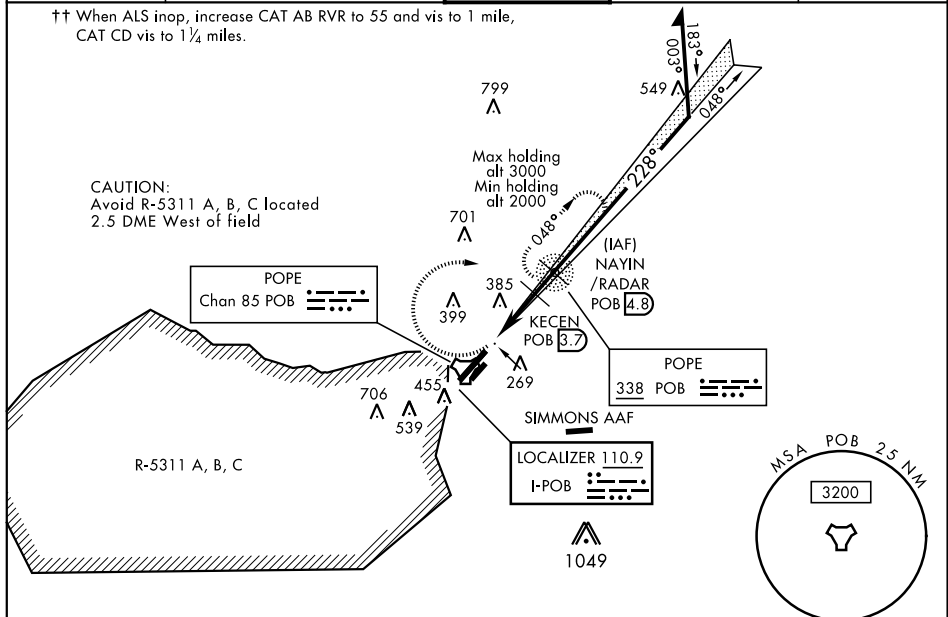


## ILS or LOC Y RWY 23

LOC I-POB <b>110.9</b>	APCH CRS <b>228°</b>	Rwy Idg <b>7501</b> TDZE <b>200</b> Arpt Elev <b>218</b>	AL-147 [USAF]	POPE AAF (KPOB)
<p><b>▼</b> * When ALS inop, increase RVR to 40 and vis to <math>\frac{3}{4}</math> mile.          ** When ALS inop, increase CAT AB RVR to 55 and vis to 1 mile,          CAT CD RVR to 60, vis to <math>1\frac{1}{2}</math> miles.          *** Circling not authorized SE of Rwy 5-23.</p>			<p>ALSF-1</p>	<p><b>MISSED APPROACH:</b> Climbing right turn to 2000 direct POB NDB and hold. Continue climb in hold to 2000.</p>

ATIS	FAYETTEVILLE APP CON		POPE TOWER	GND CON	CLNC DEL
132.3 353.725	125.175 285.575	(271° - 090°)	135.025 291.1	124.55 275.8	275.8
	133.0 290.25	(091° - 270°)			

†† When ALS inop, increase CAT AB RVR to 55 and vis to 1 mile, CAT CD vis to 1¼ miles.



## RADAR REQUIRED

EMERG SAFE ALT 100 NM 5300 FROM "POB" TACAN

Diagram illustrating a flight profile for a S-LOC 23 mission. The profile starts at 2000 feet, descends to 2000 feet, then to 1500 feet, and finally to 1120 feet. Key waypoints include TACAN, WIBAX (1.6), KEEN (3.7), and NAYIN (4.8). The profile is divided into segments A, B, and C. Segment A is from 2000 to 2000 feet, Segment B is from 2000 to 1500 feet, and Segment C is from 1500 to 1120 feet. The profile is labeled 'S-LOC 23 \*\*' and 'CIRCLING'. The diagram also shows a 'TCH 54' (Touchdown Height) of 3.00 degrees. The profile is labeled 'S-LOC 23 \*\*' and 'CIRCLING'.

CATEGORY	A	B	C	D
S-ILS 23 *	400/24		200	(200-½)
S-LOC 23 **	620/24	420 (500-½)	620/40	420 (500-¾)
*** CIRCLING	760-1	542 (600-1)	920-2 702 (800-2)	1060-2¾ 842 (900-2¾)
WITHOUT LAST STEPDOWN FIX				
S-LOC 23 ††	640/24	440 (500-½)	640/45	440 (500-¾)

ELEV 218

TDZE 200

Rwy 5 ldg 7501'  
Rwy 23 ldg 7501'

228° 3.9 NM from FAF

310  $\Delta$

201  $\Delta$

259  $\Delta$

230° 1.50 NM

2300 x 60

ASSAULT STRIP

TWX 338

338  $\star$

280  $\Delta$

350  $\Delta$

280  $\Delta$

0.50 NM

REIL Rwy 5  
HIRL Rwy 5-23  
URL Rwy 050° - 230°

FAF to MAP 3.2 NM

	Knots	60	90	120	150	180
Min:Sec	3:12	2:08	1:36	1:17	1:04	