

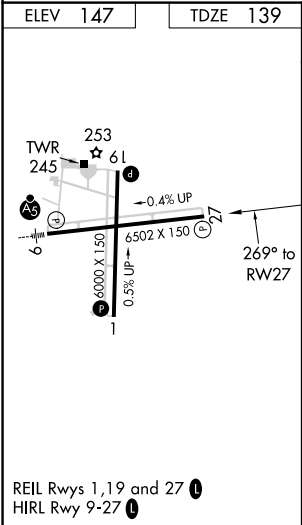
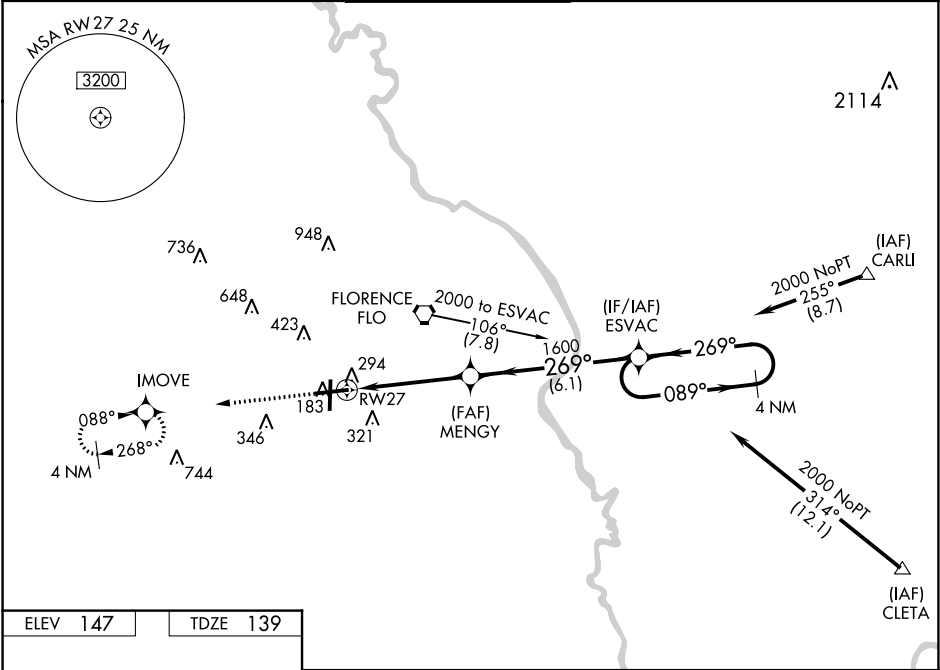
WAAS CH <b>61310</b> <b>W27A</b>	APP CRS <b>269°</b>	Rwy Idg TDZE <b>139</b> Apt Elev <b>147</b>	<b>6502</b>
--	------------------------	---	-------------

RNAV (GPS) RWY 27  
FLORENCE RGNL (F'L.O)

Baro-VNAV NA when using Darlington altimeter setting. For uncompensated Baro-VNAV systems, LNAV/VNAV NA below -15°C (5°F) or above 48°C (118°F). DME/DME RNP-0.3 NA. When local altimeter setting not received, use Darlington altimeter setting and increase all DA/MDA 60 feet. Increase LPV and LNAV/VNAV all Cats visibility ¼ mile and LNAV Cat D ½ mile. Night Landing: Rwy 1, 19 NA.

MISSED APPROACH:  
Climb to 2000 direct  
IMOVE and hold.

ATIS <b>123.625</b>	FLORENCE APP CON★ <b>118.6 341.7</b> (256°-074°) <b>135.25 316.15</b> (075°-255°)	FLORENCE TOWER★ <b>125.1</b> (CTAF) <b>353.85</b>	GND CON <b>121.9 353.85</b>	CLNC DEL <b>121.9 353.85</b>	UNICOM <b>122.95</b>
------------------------	---	--	--------------------------------	---------------------------------	-------------------------



2000 IMOVE VGSi and RNAV glidepath not coincident (VGSi Angle 3.00/TCH 46).

CATEGORY	A	B	C	D
LPV DA	474-1¼ 335 (400-1¼)			
LNAV/VNAV DA	595-1¾ 456 (500-1¾)			
LNAV MDA	560-1 421 (500-1)	560-1¼ 421 (500-1¼)		
CIRCLING	640-1 493 (500-1)	660-1 513 (600-1)	660-1½ 513 (600-1½)	740-2 593 (600-2)

SE-2, 31 DEC 2020 to 28 JAN 2021

SE-2, 31 DEC 2020 to 28 JAN 2021