
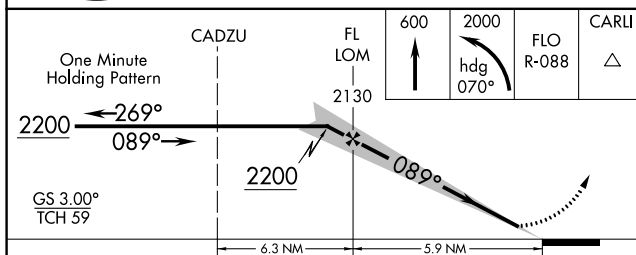
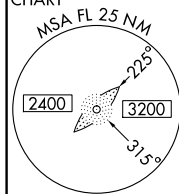
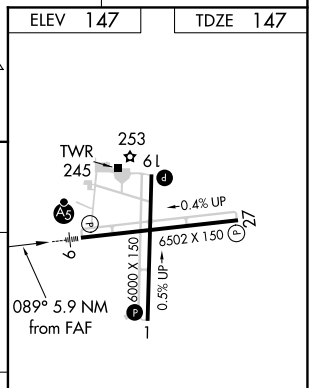


ILS or LOC RWY 9  
FLORENCE RGNL (FLO)

<b>MALSR</b> 	<b>MISSED APPROACH:</b> Climb to 600 then climbing left turn to 2000 via heading 070° and FLO VORTAC R-088 to CARLI/FLO 15.9 DME and hold.
---	--



CATEGORY	A	B	C	D
S-ILS 9	347-1/2 200 (200-1/2)			
S-LOC 9	840-1/2 693 (700-1/2)	840-1 1/2 693 (700-1 1/2)	840-1 3/4 693 (700-1 3/4)	
CIRCLING	840-1 693 (700-1)	840-2 693 (700-2)	840-2 1/4 693 (700-2 1/4)	



FLORENCE RGNL (FLO)  
ILS or LOC RWY 9

SE-2, 31 DEC 2020 to 28 JAN 2021

SE-2, 31 DEC 2020 to 28 JAN 2021