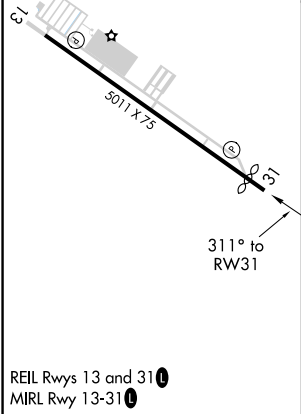
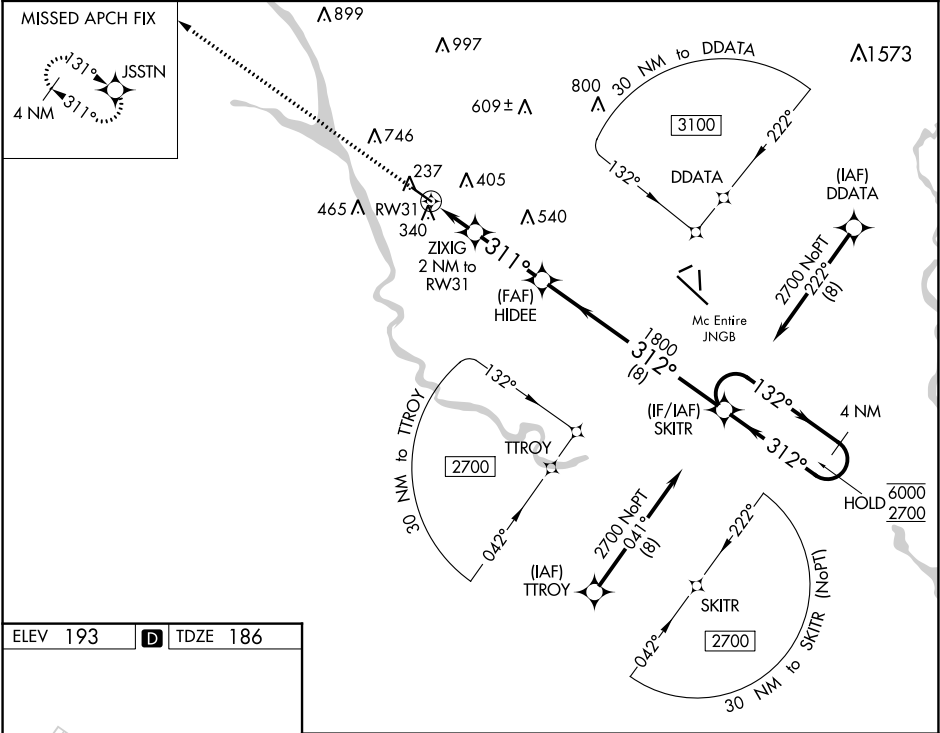


WAAS CH <b>42742</b> <b>W31A</b>	APP CRS <b>311°</b>	Rwy Idg TDZE <b>186</b> Apt Elev <b>193</b>	<b>4599</b>
--	------------------------	---	-------------

RNAV (GPS) RWY 31  
JIM HAMILTON L B OWENS (CUB)

RNP APCH. ▼ Rwy 31 helicopter visibility reduction below ¾ SM NA. For uncompensated Baro-VNAV systems, LNAV/VNAV NA below -6°C or above 54°C.		MISSED APPROACH: Climb to 2700 direct JSSTN and hold.	
ASOS <b>118.675</b>	COLUMBIA APP CON <b>133.4 285.6</b>	CLNC DEL <b>124.4</b>	UNICOM <b>123.075 (CTAF) 0</b>



2700 JSSTN		VGSI and RNAV glidepath not coincident (VGSI Angle 3.00/TCH 20).				4 NM Holding Pattern			
*LNAV only.		ZIXIG 2 NM to RW31		HIDEE 1800		SKITR			
RW31		*1.4 NM to RW31		311°		132° → 6000 ← 312° 2700			
860*		1800		312°		GP 3.00° TCH 40			
1.4 NM		0.8		2.9 NM		8 NM			
CATEGORY		A		B		C		D	
LPV DA		436-¾		250 (300-¾)					
LNAV/VNAV DA		551-1		365 (400-1)					
LNAV MDA		640-1 454 (500-1)		640-1¾ 454 (500-1¾)					

SE-2, 31 DEC 2020 to 28 JAN 2021

SE-2, 31 DEC 2020 to 28 JAN 2021