




**ILS RWY 11 (CAT II & III)**  
**COLUMBIA METROPOLITAN (CAE)**

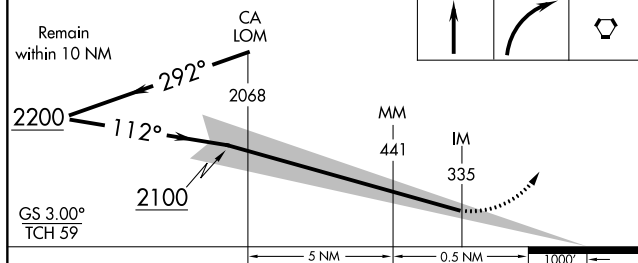


**MISSED APPROACH:** Climb to 1100 then climbing right turn to 2100 direct CAE VORTAC and hold.

[illegible]

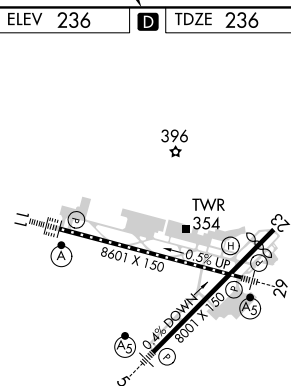
## ADF REQUIRED

1100	2100	CAE
		



CATEGORY	A	B	C	D
S-ILS 11	CAT II RA 128/12 100 DA 336			
S-ILS 11	CAT III RVR 06			

## CATEGORY II & III ILS-SPECIAL AIRCREW & AIRCRAFT CERTIFICATION REQUIRED



REIL Rwy 23  
TDZ/CL Rwy 11  
HIRL Rwy 5-23 and 11-29

SE-2, 31 DEC 2020 to 28 JAN 2021

SE-2, 31 DEC 2020 to 28 JAN 2021