

APP CRS 055°	Rwy Idg	7092
	TDZE	716
	Apt Elev	748

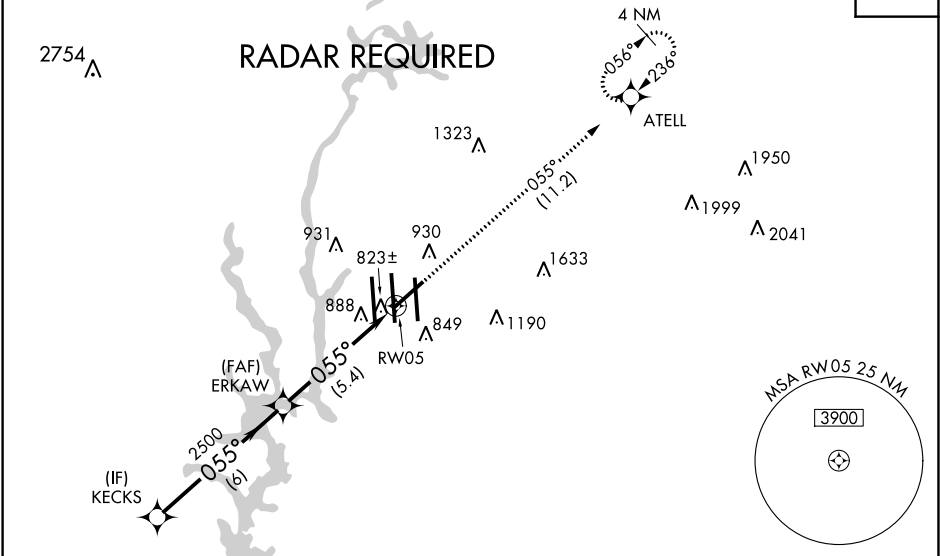
RNAV (RNP) Z RWY 5
CHARLOTTE/DOUGLAS INTL (CLT)

▼ GPS required. For uncompensated Baro-VNAV systems, procedure NA below -10°C (14°F) or above 47°C (117°F). Rwy 5 helicopter visibility reduction below ¾ SM NA. For inop MALSR, increase RNP 0.11 all Cnts visibility to RVR 6000 and RNP 0.30 all Cnts visibility to 1¾ mile.

MALSR

MISSED APPROACH: Climb to 4000 via track 055° to ATELL and hold, continue climb-in-hold to 4000.

D-ATIS	CHARLOTTE APP CON	CHARLOTTE TOWER	GND CON	CLNC DEL
ARR 121.15	(001°-119°) 128.32	(Rwys 18L-36R, 5-23) 118.1 257.8	121.8 348.6 (WEST)	127.15
DEP 132.1	(120°-295°) 120.05	(Rwy 18C-36C) 126.4 257.8	121.9 348.6 (EAST)	348.6
	(296°-360°) 134.75	(Rwy 18R-36L) 133.35 257.8		
	(180°-359°) 257.2			
	(360°-179°) 307.8			
				CPDLC



ELEV 748

TDZE 716

CATEGORY	A	B	C	D
RNP 0.11 DA		1061/40	345 (400-¾)	
RNP 0.30 DA		1216/60	500 (500-1¼)	

AUTHORIZATION REQUIRED

HRL all Rwys

REIL Rwys 18L and 23

TDZ/CL Rwys 18R, 36L, 36C and 36R

SE-2, 31 DEC 2020 to 28 JAN 2021

SE-2, 31 DEC 2020 to 28 JAN 2021