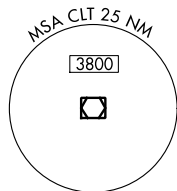
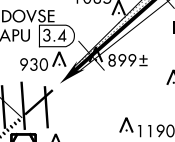
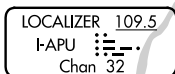
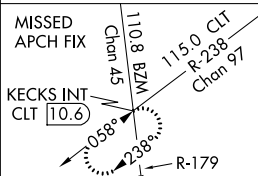
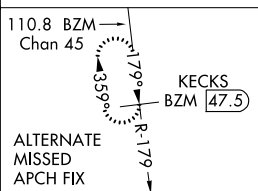
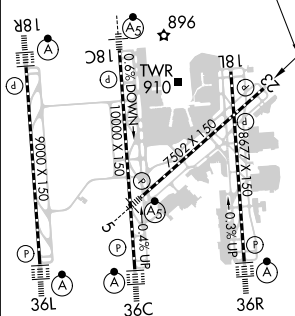


ILS or LOC RWY 23  
CHARLOTTE/DOUGLAS INTL (CLT)

**MISSED APPROACH:** Climb to 4000 via heading 235° and CLT R-238 to KECKS INT/CLT 10.6 DME and hold, continue climb-in-hold to 4000.

## RADAR REQUIRED

2340  $\Delta$

2754  $\Delta$ 235° 5.3 NM

FAF to MAP 5.3 NM

4000  
↑  
hdg 235°

CLT R-238

KECKS INT

VGS and ILS glidepath not coincident  
(VGS Angle 3.00/TCH 54).

JEPHS I-APU 18.9

ATELL INT I-APU 11.5

LECAR I-APU 6.7

DOVSE I-APU 3.4

\* LOC only

I-APU 1.5

I-APU 2.6

2500

1400\*

235°

6000

4000

2500

GS unusable below 1100.

GS 3.00° TCH 58

1.1 NM

0.8 NM

3.4 NM

4.8 NM

7.5 NM

CATEGORY	A	B	C	D
S-ILS 23	1100-1¼ 353 (400-1¼)			
S-LOC 23	1400/50 653 (700-1)	1400-1¾ 653 (700-1¾)	1400-2 653 (700-2)	
DOVSE FIX MINIMUMS				
S-LOC 23	1160/50 413 (500-1)	1160/60 413 (500-1¼)		