
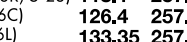
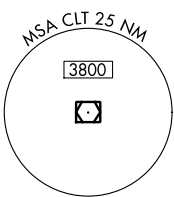
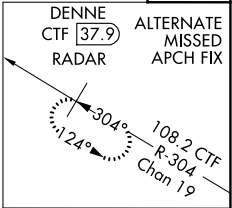
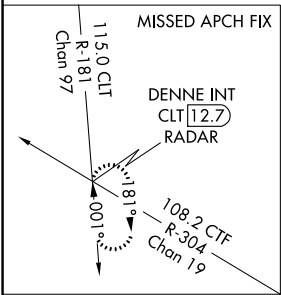


LOC/DME I-PEP <b>111.3</b> Chan 50	APP CRS <b>183°</b>	Rwy Idg <b>10000</b> TDZE <b>742</b> Apt Elev <b>748</b>
--	------------------------	--

ILS or LOC RWY 18C  
CHARLOTTE/DOUGLAS INTL (CLT)

RADAR required for procedure entry. DME or RADAR required			<div>MALS R</div> <div></div>		MISSED APPROACH: Climb to 3000 on CLT VOR/DME R-181 to DENNE INT/ CLT 12.7 DME/RADAR and hold.				
⚠ Circling NA at night. Simultaneous approach authorized. For inop ALS, increase S-LOC 18C Cat C/D visibility to 1½ SM.									
▲ ** RVR 1800 authorized with the use of FD or AP or HUD to DA.									
D-ATIS		CHARLOTTE APP CON		CHARLOTTE TOWER		GND CON		CLNC DEL	
ARR <b>121.15</b>		(001°-119°) <b>128.32</b>		(Rwys 18L-36R, 5-23) <b>118.1</b> <b>257.8</b>		<b>121.8 348.6</b> (WEST)		<b>127.15</b>	
DEP <b>132.1</b>		(120°-295°) <b>120.05</b>		(Rwy 18C-36C) <b>126.4</b> <b>257.8</b>		<b>121.9 348.6</b> (EAST)		<b>348.6</b>	
		(296°-360°) <b>134.75</b>		(Rwy 18R-36L) <b>133.35</b> <b>257.8</b>					
		(180°-359°) <b>257.2</b>		003°					
		(360°-179°) <b>307.8</b>						CPDLC	



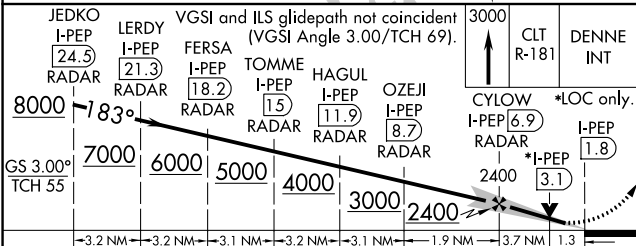
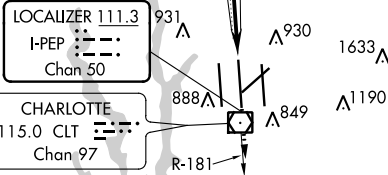
A 2754

A 1323

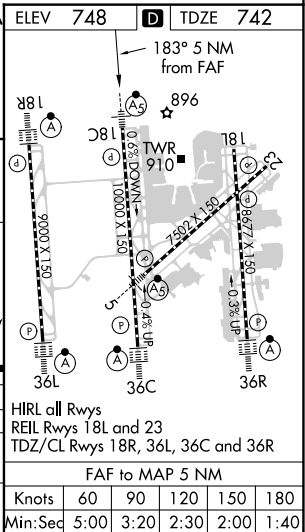
A 1950

A 1999

A 2041



CATEGORY	A	B	C	D
S-ILS 18C **	942/24 200 (200-½)			
S-LOC 18C	1220/24 478 (500-½)		1220/50 478 (500-1)	
CIRCLING	1380-1 632 (700-1)		1500-2¼ 752 (800-2¼)	1500-2½ 752 (800-2½)



SE-2, 31 DEC 2020 to 28 JAN 2021

SE-2, 31 DEC 2020 to 28 JAN 2021