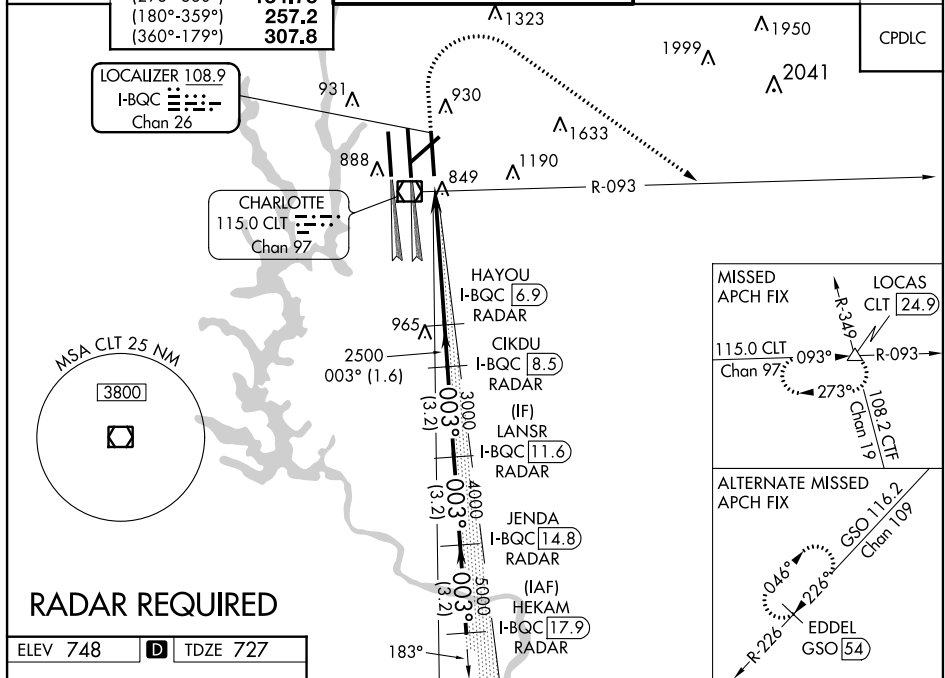


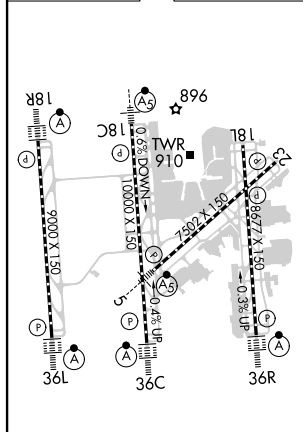
ILS RWY 36R (CAT II & III)
CHARLOTTE/DOUGLAS INTL (CLT)

D-ATIS	CHARLOTTE APP CON	CHARLOTTE TOWER	GND CON	CLNC DEL
ARR 121.15	(001°-119°) 128.32	(Rwys 18L-36R, 5-23) 118.1 257.8	121.8 348.6 (WEST)	127.15
DEP 132.1	(120°-295°) 120.05	(Rwy 18C-36C) 126.4 257.8	121.9 348.6 (EAST)	348.6
	(296°-360°) 134.75	(Rwy 18R-36L) 133.35 257.8		



RADAR REQUIRED

ELEV 748	D	TDZE 727
----------	----------	----------



HIRL all Rwy's
REIL Rwy's 18L and 23
TDZ/CL Rwy's 18R, 36L, 36C and 36R

1320 ↑	4000 ↘	CLT R-093	LOCAS CLT 24.9	VGSI and ILS glidepath not coincident (VGSI Angle 3.00/TCH 74).				HEKAM I-BQC 17.9 RADAR
				LANSR I-BQC 11.6 RADAR	JENDA I-BQC 14.8 RADAR	003°	6000	
				CIKDU I-BQC 8.5 RADAR	HAYOU I-BQC 6.9 RADAR	5000		
				2500	3000	4000		
				2500				
				1042'	5.4 NM	1.6 NM		
					3.2 NM	3.2 NM	3.2 NM	
							GS 3.00° TCH 55	
CATEGORY	A			B		C		D
S-ILS 36R				CAT II		RA 119/12 100 DA 827		
S-ILS 36R						CAT IIIa RVR 06		
S-ILS 36R						CAT IIIb NA		
S-ILS 36R						CAT IIIc NA		

CATEGORY II & III ILS SPECIAL AIRCREW & AIRCRAFT CERTIFICATION REQUIRED