

ILS RWY 18R (CAT II & III)
CHARLOTTE/DOUGLAS INTL (CLT)

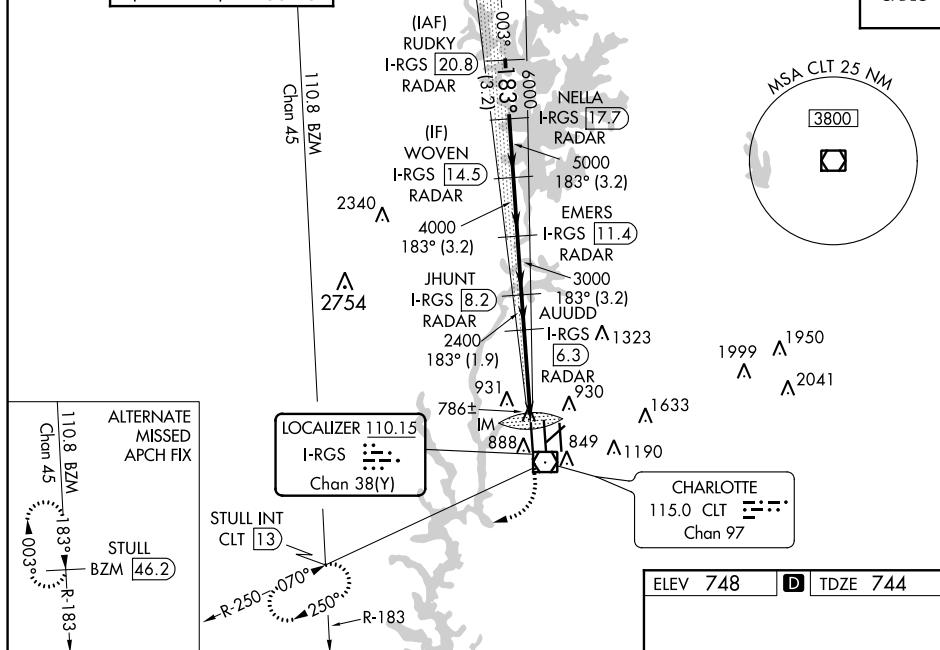
MISSED APPROACH: Climb to 1200 then climbing right turn to 4000 on CLT VOR/DME R-250 to STULL INT/CLT 13 DME and hold, continue climb-in-hold to 4000.



	GND CON	CLNC DEL
257.8	121.8 348.6 (WEST)	127.15
257.8	121.9 348.6 (EAST)	348.6

D-ATIS	CHARLOTTE APP CON		CHARLOTTE TOWER		GND CON		CNLC DEL
ARR 121.15	(001°-119°)	128.32	(Rwys 18L-36R, 5-23)	118.1	257.8	121.8 348.6 (WEST)	127.15
DEP 132.1	(120°-295°)	120.05	(Rwy 18C-36C)	126.4	257.8		
	(296°-360°)	134.75	(Rwy 18R-36L)	133.35	257.8	121.9 348.6 (EAST)	348.6
	(180°-359°)	257.2					
	(360°-179°)	307.8					CPDLC

CPDLC



SE-2, 31 DEC 2020 to 28 JAN 2021

