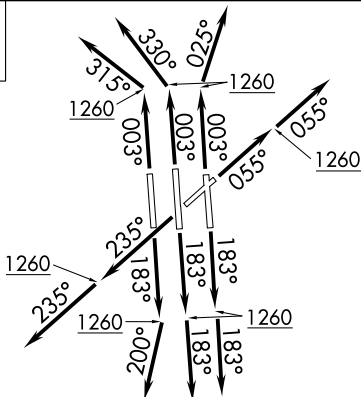


BEAVY FIVE DEPARTURE (RNAV)

CHARLOTTE/DOUGLAS INTL (CLT)
CHARLOTTE, NORTH CAROLINA

TOP ALTITUDE:
8000



NOTE: For turbojets only.

NOTE: DME/DME/IRU or GPS required.

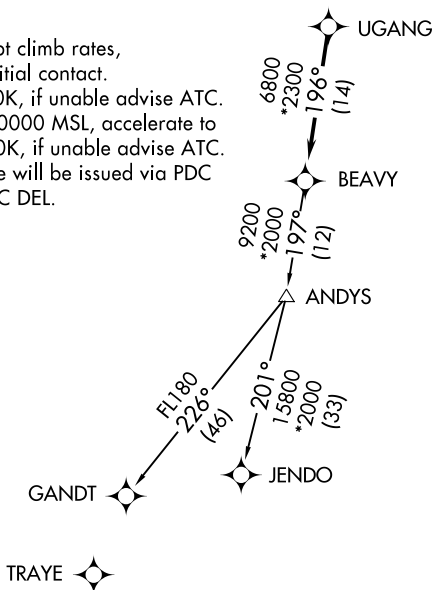
NOTE: RNAV 1.

NOTE: RADAR required.

NOTE: If unable to accept climb rates, advise ATC on initial contact.

NOTE: Accelerate to 250K, if unable advise ATC. Upon reaching 10000 MSL, accelerate to and maintain 280K, if unable advise ATC.

NOTE: Transponder code will be issued via PDC or Charlotte CLNC DEL.



TAKEOFF MINIMUMS

Rwys 18C/L/R, 23, 36C/R: Standard with minimum climb of 500' per NM to 1260.
 Rwy 5: Standard with minimum climb of 500' per NM to 1300.
 Rwy 36L: Standard with minimum climb of 500' per NM to 1400.

NOTE: Chart not to scale.

(NARRATIVE ON FOLLOWING PAGE)

BEAVY FIVE DEPARTURE (RNAV)

(BEAVY5.BEAVY) 03JAN19

CHARLOTTE, NORTH CAROLINA
CHARLOTTE/DOUGLAS INTL (CLT)

SE-2, 31 DEC 2020 to 28 JAN 2021