

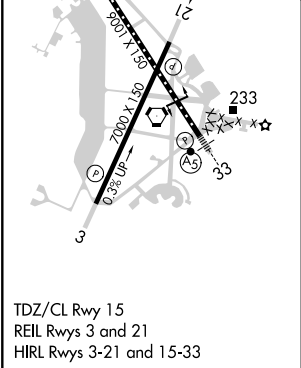
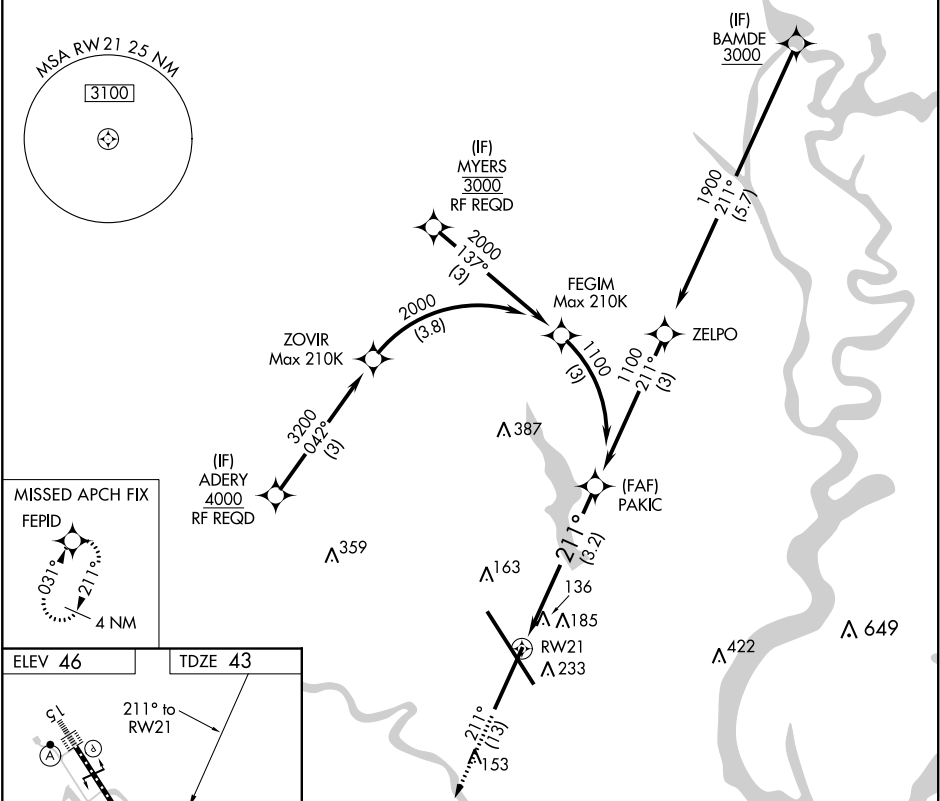
APP CRS	Rwy Idg	7000
211°	TDZE	43
	Apt Elev	46

RNAV (RNP) Z RWY 21

CHARLESTON AFB/INTL (CHS)

<div><div>▼</div><div>For uncompensated Baro-VNAV systems, procedure NA below -5°C (23°F) or above 54°C (130°F). GPS required.</div></div>	MISSED APPROACH: Climb to 3000 on track 211° to FEPID and hold.
--	---

ATIS 124.75	CHARLESTON APP CON 120.7 306.925	CHARLESTON TOWER 126.0 239.0	GND CON 121.9 348.6	CLNC DEL 127.325 291.65	CPDLC
----------------	-------------------------------------	---------------------------------	------------------------	----------------------------	-------



3000	↑	tr 211°	FEPID	See planview for multiple IF locations.
<div><div>RWY 21</div><div>PAKIC 1100</div><div>GP 3.00°</div><div>TCH 50</div></div>				
CATEGORY	A	B	C	D
RNP 0.21 DA	427-1 1/8	384 (400-1 1/8)		
RNP 0.30 DA	455-1 3/8	412 (500-1 3/8)		
AUTHORIZATION REQUIRED				