

WAAS CH <b>86909</b> <b>W02A</b>	APP CRS <b>026°</b>	Rwy Idg <b>5500</b> TDZE <b>1028</b> Apt Elev <b>1028</b>
--	------------------------	---

## RNAV (GPS) RWY 2

MOREHEAD-ROWAN COUNTY CLYDE A THOMAS RGNL (SYM)

▼  
▲

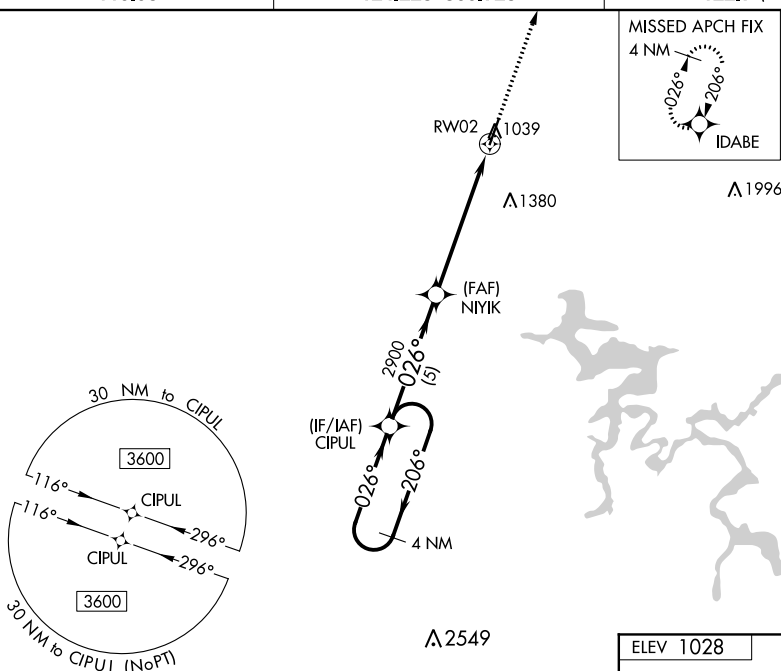
For uncompensated baro-VNAV systems, LNAV/VNAV minima below -19 °C (2 °F) or above 34 °C (130 °F), DME/DME RNP-0.3 NA, Baro-VNAV and VDP NA when using Mount Sterling altimeter setting. When local altimeter setting not received, use Mount Sterling altimeter setting; increase all DA 50 feet and all MDA 60 feet; increase LPV all Cats and LNAV Cats C/D visibility ½ mile, LNAV/VNAV all Cats visibility ¼ mile, and Circling Cats C/D visibility ¼ mile.

**MISSED APPROACH:**  
Climb to 3600 direct  
IDABE and hold.

AWOS-3  
**119.95**

INDIANAPOLIS CENTER  
124,225 360,725

UNICOM  
122.7 (CTAF) **L**



4 NM Holding Pattern

VGSI and RNAV glidepath not coincident (VGSI Angle 3.00/TCH 30).

CIPUL

3600

←206°

026°→

026°


NIYIK 2900

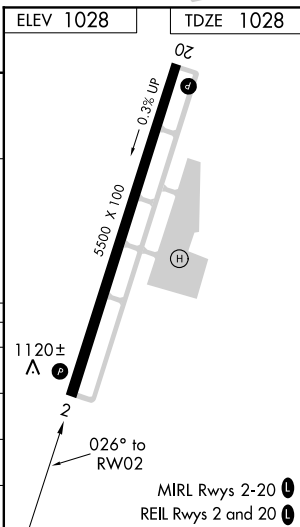
\*1.4 NM to RW02

\*LNAV only

RW02

GP 3.00° TCH 40

CATEGORY	A	B	C	D
LPV DA	1228- $\frac{3}{4}$		200 (200- $\frac{3}{4}$ )	
RNAV/ VNAV DA	1439-1 $\frac{3}{8}$		411 (500-1 $\frac{3}{8}$ )	
RNAV MDA	1500-1	472 (500-1)	1500-1 $\frac{3}{8}$	472 (500-1 $\frac{3}{8}$ )
 CIRCLING	1520-1	492 (500-1)	1760-2 732 (800-2)	1820-2 $\frac{1}{2}$ 792 (800-2 $\frac{1}{2}$ )



## RNAV (GPS) RWY 2