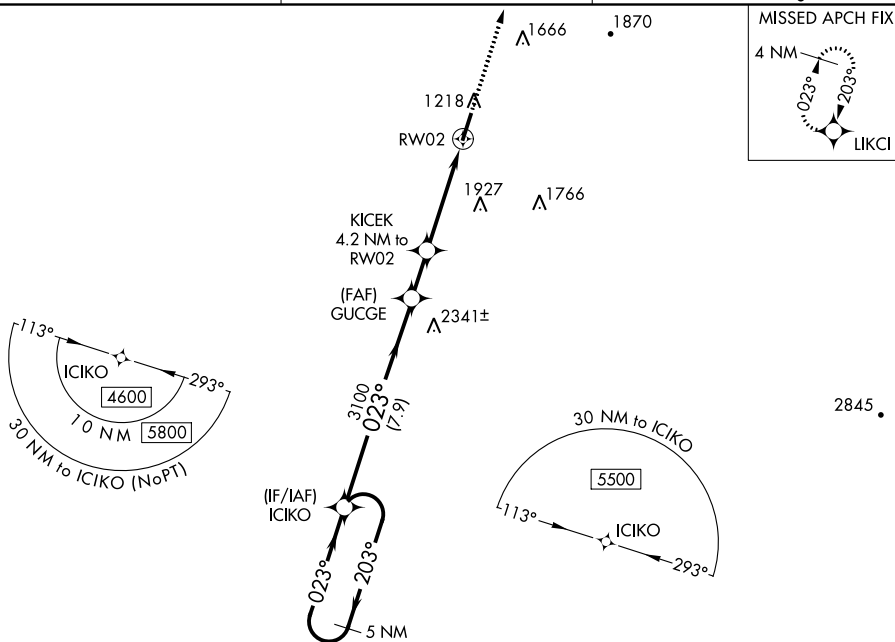


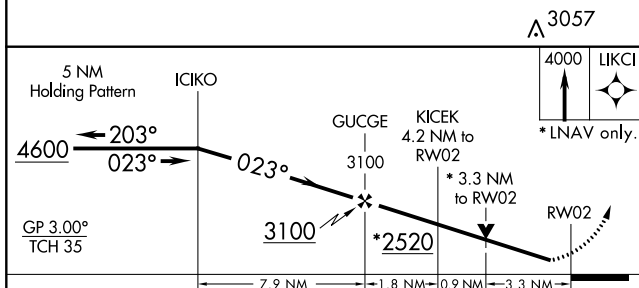
RNAV (GPS) RWY 2

WILLIAMSBURG-WHITLEY COUNTY (BYL)

MISSED APPROACH:
Climb to 4000 direct
LKCI and hold.

UNICOM
122.7 (CTAF) 

ELEV 1178		TDZE 1168
-----------	--	-----------



CATEGORY	A	B	C	D
LPV DA	1418 $\frac{7}{8}$		250 (300- $\frac{7}{8}$)	
LNAV MDA	2300-1 $\frac{1}{4}$ 1132 (1200-1 $\frac{1}{4}$)	2300-1 $\frac{1}{2}$ 1132 (1200-1 $\frac{1}{2}$)	2300-3	1132 (1200-3)
CIRCLING	2300-1 $\frac{1}{4}$ 1122 (1200-1 $\frac{1}{4}$)	2300-1 $\frac{1}{2}$ 1122 (1200-1 $\frac{1}{2}$)	2300-3	1122 (1200-3)

