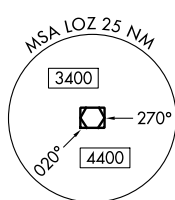


LOC RWY 20
WILLIAMSBURG-WHITLEY COUNTY (BYL)

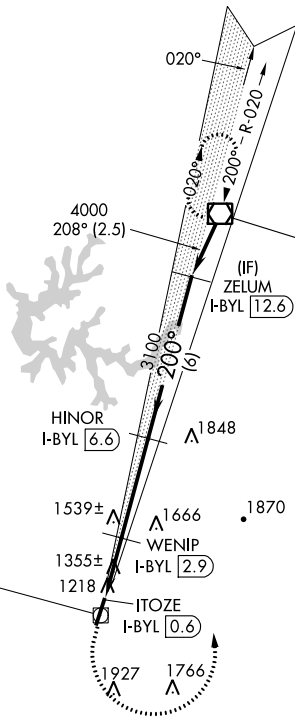
Rwy 20 helicopter visibility reduction below $\frac{3}{4}$ SM NA. VDP NA when using London altimeter setting. When local altimeter setting not received, use London altimeter setting and increase all MDAs 60 feet and visibility S-20 Cats C/D and Circling Cat D $\frac{1}{2}$ SM.

MISSED APPROACH: Climb to 1800 then climbing left turn to 4000 direct LOZ VOR/DME and hold.

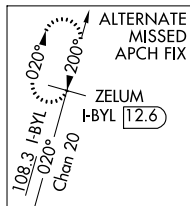
AWOS-3 119.575	INDIANAPOLIS CENTER 124.625 371.925	UNICOM 122.7 (CTAF) 0
--------------------------	---	---------------------------------



Procedure NA for arrival
on LOZ VOR/DME airway
radials 174 CW 245.

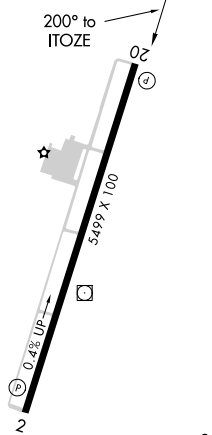


IAF
LONDON
116.1 LOZ 
Chan 108



LOCALIZER 108.3
I-BYL $\ddot{::}::\dot{-}$
Chan 20
LOC offset 2.88°

ELEV	1178		TDZE	1178
------	------	--	------	------



MIRL Rwy 2-20 **L**
REIL Rwy 2 and 20 **L**

<div>1800 ↑</div> <div>4000 ↖</div> <div>LOZ </div>			VGSI and descent angles not coincident (VGSI Angle 3.17/TCH 30).			1800
<div><div>ITOZE I-BYL 0.6</div><div>I-BYL 1.5</div><div>WENIP I-BYL 2.9</div><div>HINOR I-BYL 6.6</div><div>ZELUM I-BYL 12.6</div></div>			<div>1940</div> <div>3100</div> <div>4000</div> <div>200°</div>			
<div>1 NM</div> <div>1.3 NM</div> <div>3.7 NM</div> <div>6 NM</div>			<div>2.95°</div> <div>TCH 45</div>			
CATEGORY	A		B	C	D	
S-20	1740-1		562 (600-1)	1740-1½ 562 (600-1½)		
CIRCLING	1760-1		582 (600-1)	1760-1½ 582 (600-1½)	2080-3 902 (1000-3)	