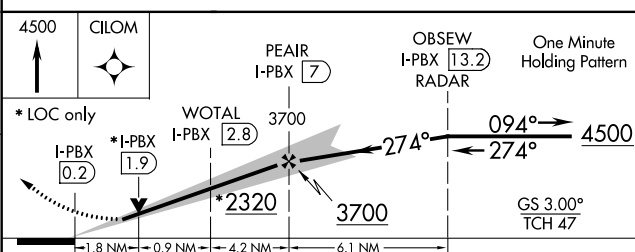
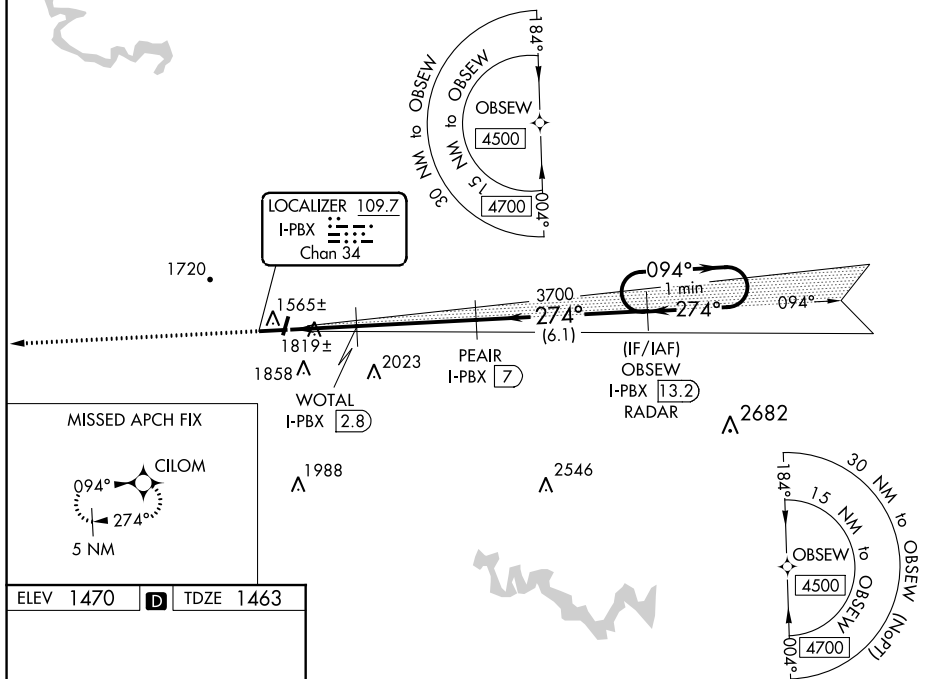



ILS or LOC RWY 27  
PIKE COUNTY-HATCHER FIELD (PBX)

**MISSED APPROACH:** Climb to 4500  
direct CILOM and hold.

UNICOM  
122.8 (CTAF) **L**

## RNAV 1-GPS or RADAR REQUIRED



CATEGORY	A	B	C	D
S-ILS 27	1663-1 200 (200-1)			
S-LOC 27	2080-1 617 (700-1)		2080-1 $\frac{3}{4}$ 617 (700-1 $\frac{3}{4}$ )	
 CIRCLING	2120-1 650 (700-1)	2160-1 690 (700-1)	2160-2 690 (700-2)	2460-3 990 (1000-3)

SE-1, 31 DEC 2020 to 28 JAN 2021