

| | | | |
|--|------------------------|-----------------------------|---|
| WAAS CH 45926 W03A | APP CRS 027° | Rwy Idg TDZE Apt Elev | 5003 530 537 |
|--|------------------------|-----------------------------|---|

RNAV (GPS) RWY 3

OHIO COUNTY (JQD)

RNP APCH.

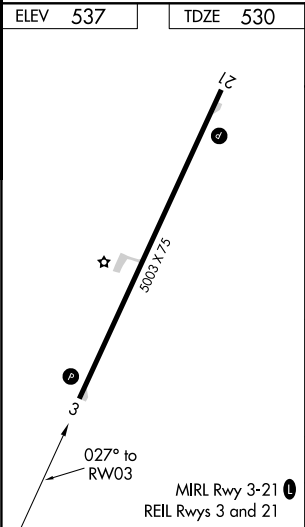
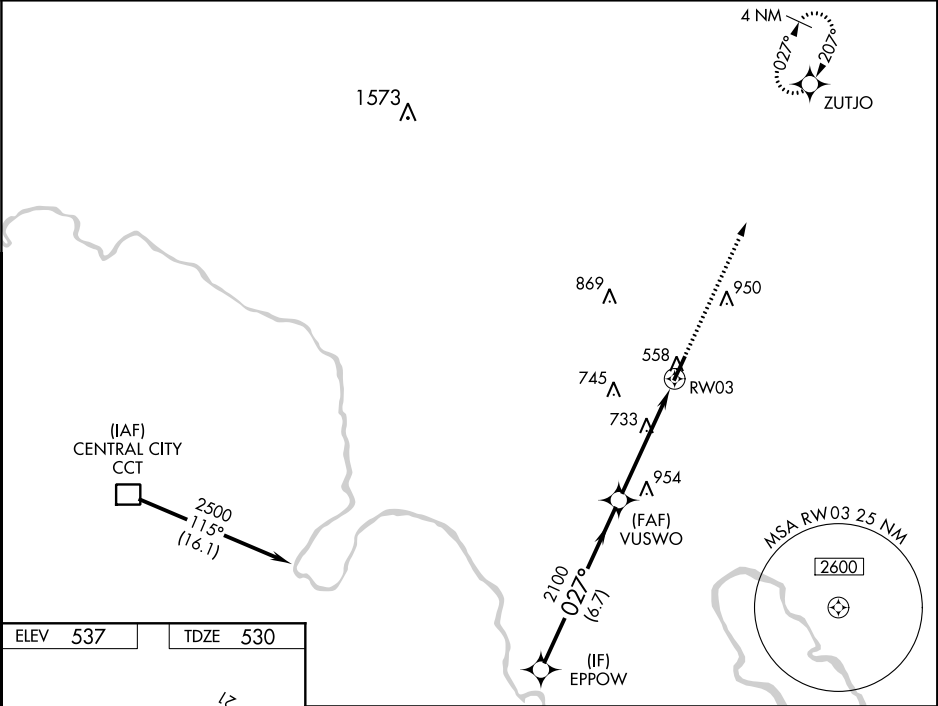
▼

▲

Baro-VNAV and VDP NA when using Owensboro altimeter setting. For uncompensated Baro-VNAV systems, LNAV/VNAV NA below -16°C or above 54°C. When local altimeter setting not received, use Owensboro altimeter setting and increase LPV and LNAV/VNAV DA to 851 feet. Increase all MDA 80 feet and LNAV Cat C visibility ⅔ SM and Circling Cat C visibility ¼ SM.

MISSED APPROACH:
Climb to 2500 direct ZUTJO and hold.

| | | |
|--------------------------|--|---------------------------------|
| AWOS-3PT 132.1 | EVANSVILLE APP CON ★ 124.025 290.9 | UNICOM 122.8 (CTAF) 0 |
|--------------------------|--|---------------------------------|



| | | | | | |
|-----------------|-----------------------|-----------------------|-------------------------|--------|--|
| EPPOW | | VUSWO | | RWY 03 | |
| 2500 | | 2100 | | 2500 | |
| GP 3.00° TCH 40 | | 2100 | | 2500 | |
| 6.7 NM | | 3.3 NM | | 1.5 NM | |
| CATEGORY | A | B | C | D | |
| LPV DA | 780-1 | 250 (300-1) | | NA | |
| LNAV/VNAV DA | 780-1 | 250 (300-1) | | NA | |
| LNAV MDA | 1040-1 | 510 (600-1) | 1040-1⅓ 510 (600-1⅓) | NA | |
| CIRCLING | 1040-1 503 (600-1) | 1100-1 563 (600-1) | 1300-2¼ 763 (800-2¼) | NA | |

SE-1, 31 DEC 2020 to 28 JAN 2021

SE-1, 31 DEC 2020 to 28 JAN 2021