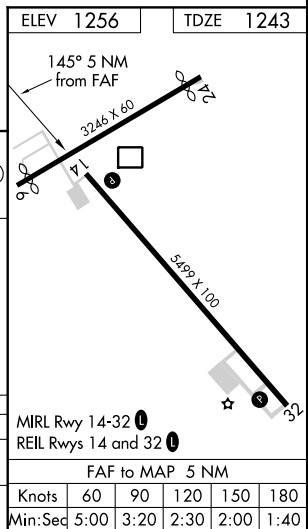
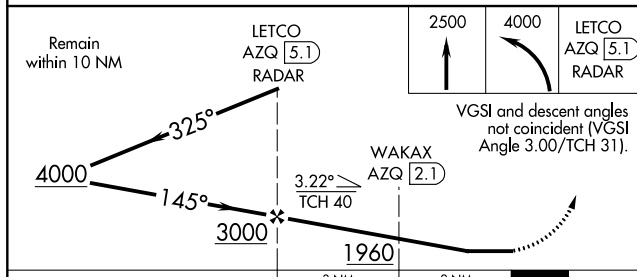
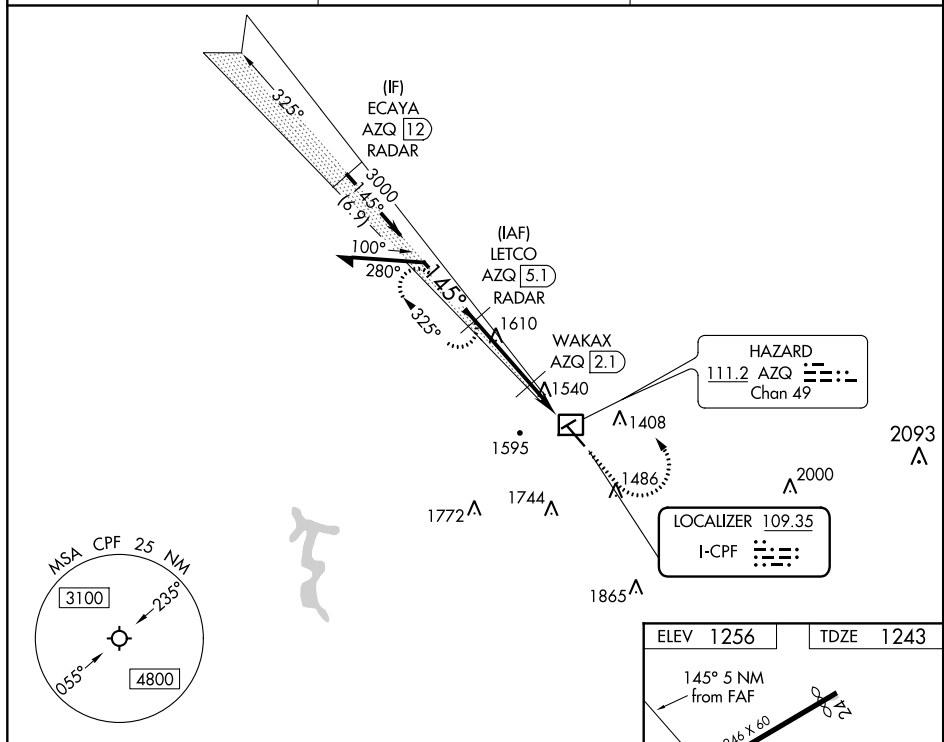



LOC RWY 14
WENDELL H FORD (CPF)

MISSED APPROACH: Climb to 2500 then climbing left turn to 4000 to LETCO/AZQ 5.1 DME/RADAR and hold, continue climb-in-hold to 4000.

AWOS-3
119.025

INDIANAPOLIS CENTER	
126.575	257.85

UNICOM
122.7 (CTAF) **L**

CATEGORY	A	B	C	D
S-LOC 14	1800-1 557 (600-1)	1800-1 $\frac{5}{8}$ 557 (600-1 $\frac{5}{8}$)		
 CIRCLING	2000-1 744 (800-1)	2040-1 784 (800-1)	2060-2 $\frac{1}{4}$ 804 (900-2 $\frac{1}{4}$)	2140-3 884 (900-3)

SE-1, 31 DEC 2020 to 28 JAN 2021